

Seattle's Wallingford neighborhood developed in the early 20th century as a streetcar suburb with a thriving commercial core along N. 45th Street. Today, this dynamic, evolving corridor is encircled by a rich collection of popularly styled early-20th century houses and apartment blocks, as well as one-of-a-kind artistic and natural sensory delights. Explore these neighborhood highlights in any order and at your own pace!

Please remain on publicly accessible sidewalks and paths while observing features highlighted in this brochure.



Scan the QR code on the front of this brochure for a tour map with more images and richer descriptions of each feature.

The Home of the Good Shepherd opened in 1907 to provide shelter, education, and training to young women in need. It closed in 1971 and was threatened with demolition and redevelopment. The neighborhood successfully worked to save the property. It was listed in the *National Register of Historic Places* and later leased by *Historic Seattle* for use as a multi-purpose community center.



Good Shepherd Center
4646 SUNNYSIDE AVE N

Built in 1901, this house first sat at 46th and Stone Way. It was moved in about 1925 to make way for the new *Blue Star* building. It was the childhood home of George E. Hunt, Jr., one of the UW's "boys in the boat" who won gold rowing in the 1936 Olympics.



Moved Residence
1603 N 48TH ST

Formerly *Interlake School* (1904-1971), the building was preserved and adapted for residences and retail in 1982 as *Wallingford Center*.



Wallingford Center
1815 N 45TH ST

Popular in the 1910s and 1920s, the Dutch Colonial Revival style is defined by its double-pitched roof and colonial details, such as the multi-light sash windows and its symmetrical façade.



Tilth Garden
4646 SUNNYSIDE AVE N

The *Tilth Alliance* community learning garden, located on the west side of the building near where a swimming pool once was, features a solar greenhouse, a rain garden, worm bins and compost systems.



Fire Station No. 11
1629 N 45TH ST

This house was built by Danish immigrant Henry Nelson, an early-day real estate developer in Wallingford. The ghost sign (feature no. 11) advertises his firm.



Century-old residence, built 1910
4508 BAGLEY AVE N

Heritage Tree
1609 N 49TH ST

This sweet chestnut (*Castanea sativa*) tree was planted around 1910 and was recently designated a *Heritage Tree* by the City of Seattle. Don't miss the marker near the tree with more information.



Dutch Colonial Revival
1722 N 46TH ST

Animal Storm
1815 N 45TH ST

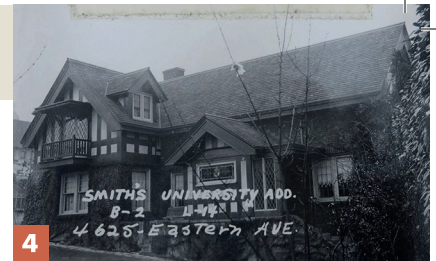


More than 60 animals are depicted in bas-relief on the 18-foot-tall pillar by artist Ron Petty.

Built in 1911, this former firehouse was designed by city architect D.R. Huntington. The soaring tower was for hanging firehoses to dry. Horse-drawn fire trucks were used here until 1921. It was landmarked in 1983 and adapted for use as a clinic.

Bittman Residence
4625 EASTERN AVE N

Built in 1915, this impressive residence was designed by engineer and architect Henry Bittman for his own family. It is one of only a few Tudor Revival-style houses in Wallingford and sits on a large lot. The interior features murals painted by Northwest's impressionist painter Fokko Tadama. The property's overgrown garden was restored by Cass Turnbull, the late founder of *PlantAmnesty*.



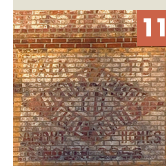
St. Benedict Catholic School
4811 WALLINGFORD AVE N

This elementary school was founded in 1908, located in its church (pictured). Increasing enrollment prompted construction of the current school building in 1924. It is designed in the Collegiate Gothic style, popular among schools and university campuses in the 1920s.



Elim Swedish Baptist Church
4600 SUNNYSIDE AVE N

Ghost Sign
2202 N 45TH ST



Ghost signs are old hand-painted advertisements that have been preserved on a building for a long period of time. This form of advertising was most common between 1890 and 1950. This sign advertised Henry Nelson's real estate firm (see feature no. 10).



8
Meridian Playground
4646 SUNNYSIDE AVE N

Wallingford residents petitioned the City of Seattle to open this playground in the late 1970s. It was redeveloped in 2002, full of art based on children's books.

Wallingford's main retail strip has many businesses located in houses, such as Djan's restaurant and A Muddy Cup.



Djan's & A Muddy Cup
264-66 NE 45TH ST

The stone arch and entrance way to Meridian Playground was designed and built in 1981 by Charles Greening, clearly a labor of love.



9
Meridian Archway
N 50TH ST & MERIDIAN AVE N

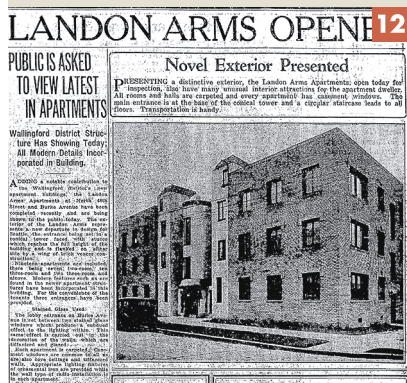
Jud Yoho Residence
4718 2ND AVE NE



Jud Yoho was an all-in-one real estate broker, designer, and contractor, known in Seattle for his bungalows. To promote his business, Yoho built and moved his family into this Craftsman showhouse in 1911. It was featured on the cover of the July 1913 issue of Bungalow Magazine.

Multi-family housing was an important part of Wallingford in the booming 1920s. Three apartment buildings near this intersection were built by Jack Landon in 1928 and 1929.

Apartment Block Row
N 46TH ST & BURKE AVE N



THANK YOU VOLUNTEERS AND SPONSORS

This brochure was produced in 2022 by Historic Wallingford, an all-volunteer organization dedicated to fostering an awareness of and appreciation for Wallingford's history and architecture.

Thank you to our Neighborhood Sponsors



Historic Wallingford Volunteers

Sarah Martin, Project Manager
Linda Sewell, Brochure Design
Rhonda Bush

Ari Hock
Patrick Long
Jean Werner



The area featured in this brochure is also known as the Wallingford-Meridian Streetcar Historic District. It was listed in the National Register of Historic Places on December 9, 2022.

Summer & Fall 2022, Reprinted 2025

Wallybug
N 49TH ST & BURKE AVE N



This ladybug has been painted (and repainted) by Allison Jansen, Eric Higbee and neighbors since 2006 as a whimsical way to slow traffic through this intersection.



2
Leo Lassen Residence
4517 LATONA AVE NE

Leo Lassen, known as "The Great Gabbo," and "The Voice," was the radio voice of local pro baseball teams and lived in this house from 1928 until his death in 1975. He did radio broadcasts of the Seattle Indians and the Seattle Rainiers baseball games from 1931 to 1960. He was inducted into the Washington Sports Hall of Fame in 1974.

EXPLORING WALLINGFORD



NORTH WALLINGFORD

Discover Wallingford through this self-guided tour featuring natural, historical, and artistic points of interest along and north of the 45th Street business district. The best way to explore the neighborhood is to take your time and look around!



HISTORICWALLINGFORD.ORG