

United States Department of the Interior  
National Park Service

# National Register of Historic Places Registration Form

This form is for use in nominating or requesting determinations for individual properties and districts. See instructions in National Register Bulletin, *How to Complete the National Register of Historic Places Registration Form*. If any item does not apply to the property being documented, enter "N/A" for "not applicable." For functions, architectural classification, materials, and areas of significance, enter only categories and subcategories from the instructions. **Place additional certification comments, entries, and narrative items on continuation sheets if needed (NPS Form 10-900a).**

## 1. Name of Property

historic name Wallingford-Meridian Streetcar Historic District

other names/site number Wallingford Historic District - North

## 2. Location

street & number Roughly bounded by N and NE 50th Street (north), 5th Avenue NE (east), NE  not for publication

city or town Seattle 45th Street and N 46th Street (south), and Interlake Avenue N (west).  vicinity

state Washington code WA county King code 33 zip code 98103/98105

## 3. State/Federal Agency Certification

As the designated authority under the National Historic Preservation Act, as amended,

I hereby certify that this  nomination  request for determination of eligibility meets the documentation standards for registering properties in the National Register of Historic Places and meets the procedural and professional requirements set forth in 36 CFR Part 60.

In my opinion, the property  meets  does not meet the National Register Criteria. I recommend that this property be considered significant at the following level(s) of significance:

national  statewide  local

Applicable National Register Criteria

A  B  C  D

October 24, 2022

Signature of certifying official/Title

Date

WASHINGTON STATE SHPO

State or Federal agency/bureau or Tribal Government

In my opinion, the property  meets  does not meet the National Register criteria.

Signature of commenting official

Date

Title

State or Federal agency/bureau or Tribal Government

## 4. National Park Service Certification

I hereby certify that this property is:

entered in the National Register  determined eligible for the National Register

determined not eligible for the National Register  removed from the National Register

other (explain:)

Signature of the Keeper

Date of Action

WALLINGFORD-MERIDIAN STREETCAR HISTORIC DISTRICT  
Name of Property

KING CO., WA  
County and State

**5. Classification**

**Ownership of Property**

(Check as many boxes as apply.)

- private
- public - Local
- public - State
- public - Federal

**Category of Property**

(Check only **one** box.)

- building(s)
- district
- site
- structure
- object

**Number of Resources within Property**

(Do not include previously listed resources in the count.)

<u>Contributing</u>	<u>Noncontributing</u>	
643	286	buildings
		district
		site
		structure
		object
643	286	<b>Total</b>

**Name of related multiple property listing**

(Enter "N/A" if property is not part of a multiple property listing)

Historic Residential Suburbs in the United States, 1830-1960

**Number of contributing resources previously listed in the National Register**

1 (Home of the Good Shepherd)

**6. Function or Use**

**Historic Functions**

(Enter categories from instructions.)

DOMESTIC/single dwelling, multiple dwelling

**Current Functions**

(Enter categories from instructions.)

DOMESTIC/single dwelling, multiple dwelling

**7. Description**

**Architectural Classification**

(Enter categories from instructions.)

LATE 19TH AND 20TH CENTURY REVIVALS

Colonial Revival, Tudor Revival, Classical Revival

LATE 19TH AND 20TH CENTURY AMERICAN MOVEMENTS

Craftsman, Prairie School

LATE VICTORIAN/

Queen Anne – Free Classic

**Materials**

(Enter categories from instructions.)

foundation: CONCRETE; BRICK; STONE

walls: WOOD/Weatherboard, Shingle

BRICK; STUCCO; SYNTHETICS/Vinyl

roof: ASPHALT; METAL

other:

**WALLINGFORD-MERIDIAN STREETCAR HISTORIC DISTRICT**  
 Name of Property

**KING CO., WA**  
 County and State

**Narrative Description**

(Describe the historic and current physical appearance of the property. Explain contributing and noncontributing resources if necessary. Begin with a **summary paragraph** that briefly describes the general characteristics of the property, such as its location, setting, size, and significant features.)

The nominated area encompasses single and multiple family residential area and religious buildings which were historically serviced by a series of streetcar lines and enclosed by commercial development and arterial roads. The historic district is along the north edge of the Wallingford neighborhood’s commercial corridor along N and NE 45<sup>th</sup> Streets. Interstate 5 (completed through Seattle in 1965, with the frontage road 5<sup>th</sup> Avenue NE used as the boundary) marks the east edge and Stone Way N (with Interlake Avenue N one block east and behind the commercial development used as the boundary) marks the west edge. The east-west arterials N and NE 50<sup>th</sup> Streets define the north edge, separating this historic district from plats and circulation to the north oriented towards Green Lake.

Underlying plats, recorded between 1888 and 1922, provide the organizational framework for roads, blocks, and lots and convey development influences shaping the spatial character of the historic district. Plat names reflect an early development association to both Lake Union to the south and the University of Washington campus to the east.

The Home of the Good Shepherd (built 1906, listed 1976, 4649 Sunnyside Avenue N, 11.5 acres) is the only previously listed National Register of Historic Places property within the historic district.

*Table 1. Resource Counts by Status*

STATUS	NUMBER OF PRIMARY BUILDINGS	NUMBER OF SECONDARY BUILDINGS	TOTALS
<b>Contributing</b>	484	159	643
<b>Non-contributing</b>	159	127	286
<b>Totals</b>	<b>643</b>	<b>286</b>	<b>929</b>
<b>NRHP Listed</b>	1 – Not counted in resource count		

Construction of 92% of the extant primary (not including garages) buildings within the historic district occurred within the period of significance for the historic district, 1901-1941. Subsequent infill and replacement construction amounts to 8% of extant primary buildings.

*Table 2. Construction by Decade*

PERIOD	NUMBER OF PRIMARY BUILDINGS BY DECADE		
<b>1901-1909</b>	119	<b>1970-1979</b>	4
<b>1910-1919</b>	282	<b>1980-1989</b>	3
<b>1920-1929</b>	185	<b>1990-1999</b>	2
<b>1930-1939</b>	6	<b>2000-2009</b>	13
<b>1940-1949</b>	5	<b>2010-2021</b>	13
<b>1950-1959</b>	5		
<b>1960-1969</b>	6	<b>Total</b>	<b>643</b>

**WALLINGFORD-MERIDIAN STREETCAR HISTORIC DISTRICT**  
 Name of Property

**KING CO., WA**  
 County and State

The historic district consists predominately of one-and-a-half-story (1.5) single-family buildings. There are high numbers of one- and two-story buildings, with only a few two-and-a-half- and three-story single-family buildings. Multiple family apartments are mostly three stories, with some one to two-and-a-half stories. Religious buildings are two to three stories. The one mixed-use commercial building is two stories.

Most buildings within the historic district function as single-family residences. There have been some conversions of single-family dwellings to multiple family both within and outside of the period of significance. Purpose built multiple family buildings comprise a slightly larger number of buildings than the single to multi conversions. Religious and commercial buildings comprise only a small portion of building use within the historic district.

*Table 3. Current Functions*

CLASSIFICATION	NUMBER OF BUILDINGS
<b>Commercial</b>	1
<b>Domestic – Multi Family</b>	32
<b>Domestic – Single-family</b>	570
<b>Domestic – Single-family converted to Multi Family</b>	34
<b>Religious Facility</b>	5
<b>Other (former religious facility operated by non-profit)</b>	1

There are 15 architectural styles represented within the historic district, of which 10 apply to buildings built within the period of significance. The styles used during the period of significance span the Late Victorian (Queen Anne – Free Classic), Late 19<sup>th</sup> and 20<sup>th</sup> Century Revivals (Colonial, Classical, Swiss Chalet, and Tudor Revivals and Tudor Composites), and the Late 19<sup>th</sup> and Early 20<sup>th</sup> Century American Movement (Prairie School, Craftsman) periods.

The most common style occurring within the period of significance is Craftsman providing the predominant visual character within the historic district, followed by Classical Revival, Colonial and Dutch Colonial Revival, and Tudor Revival and Tudor Composite. The following table conveys the styles of buildings built within the period of significance.

*Table 4. Architectural Styles within the Period of Significance*

STYLE	NUMBER OF BUILDINGS	STYLE	NUMBER OF BUILDINGS
<b>Arts and Crafts</b>	2	<b>Mission Revival</b>	1
<b>Classical Revival</b>	94	<b>Neo-classical</b>	1
<b>Collegiate Gothic</b>	1	<b>Queen Anne – Free Classic</b>	4
<b>Colonial Revival</b>	68	<b>Prairie</b>	4
<b>Craftsman</b>	315	<b>Swiss Chalet</b>	2
<b>Dutch Colonial Revival</b>	26	<b>Tudor Revival and Tudor Composite</b>	24

WALLINGFORD-MERIDIAN STREETCAR HISTORIC DISTRICT  
Name of Property

KING CO., WA  
County and State

## District Description

### **Setting**

Wallingford is included within the ancestral land of the Coast Salish peoples, in particular the dxʷdəwʔabš, the Duwamish Tribe. The historic district is located within the City of Seattle, north of downtown and Lake Union, west of the University of Washington, and south of Green Lake. The historic district resides within the north-central portion of the Wallingford neighborhood. N and NE 50<sup>th</sup> Street bound the historic district's north edge, with 5<sup>th</sup> Avenue NE the east edge along Interstate 5. The south edge is the back (north) side of commercial development along N and NE 45<sup>th</sup> Street. Interlake Avenue N (a former streetcar line route) marks the west edge of the historic district, behind (one block east of) the commercial development along Stone Way N. Adjacent neighborhoods consists of the University District to the east, Fremont and Phinney Ridge to the west, and Green Lake to the north.

The historic district encompasses the single and multiple family residential area and associated religious buildings that were historically served by a series of streetcar lines and enclosed by commercial development and arterial roads. The neighborhood setting consists of residential streets with concrete curbs, planting strips and concrete sidewalks. Some parcels at sloped areas are located above street level with a retaining wall or sloped grade transitioning to the sidewalk. Curb cuts and driveways provide access to garages located both at the front and at the back of parcels.

The historic district slopes gradually downward from a central high point. The high point, at 310 feet in elevation, is the grade around the Home of Good Shepherd building. Except for a short, steep section between Burke Avenue N and Wallingford Avenue N, the grade in the west half of the historic district slopes gradually downward to the west reaching an elevation of 210 feet at the outer edge of the historic district. Grade in the east half slopes gradually to the southeast reaching an elevation of 225 feet at the southeast corner of the historic district. There is a steeper section that extends diagonally from the south boundary along Eastern Avenue N, east along NE 47<sup>th</sup> Street, and north along 4<sup>th</sup> Avenue NE.

### **Plats**

The following plats establish the distinct, underlying organizational framework for

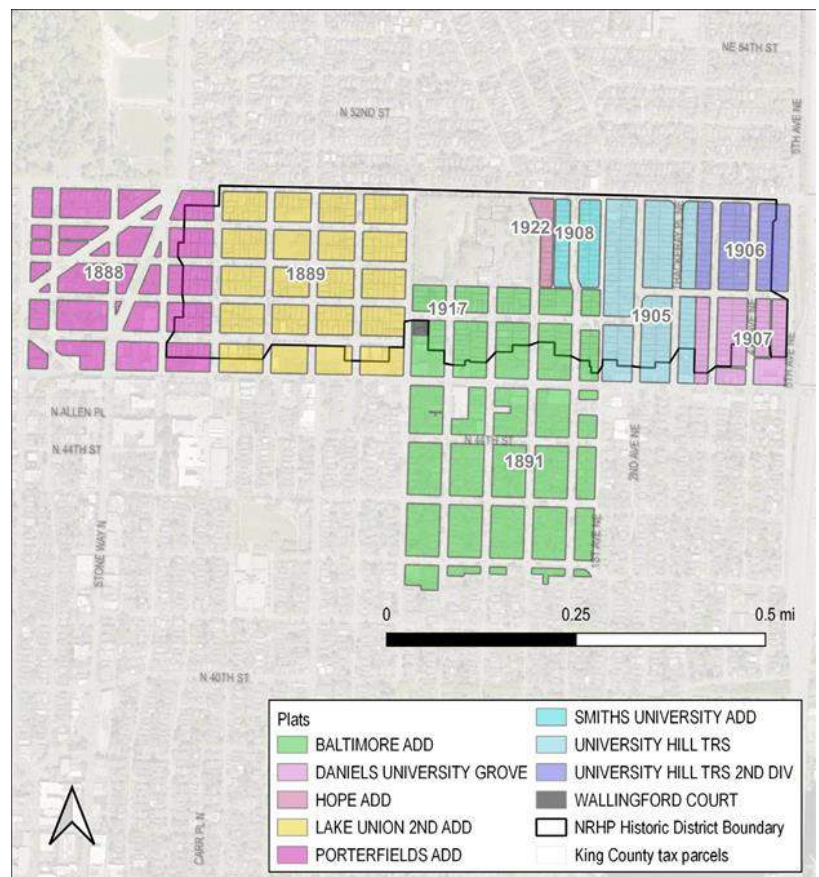


Fig. 1. Map showing the underlying plats relative to the historic district boundary.

**WALLINGFORD-MERIDIAN STREETCAR HISTORIC DISTRICT**  
 Name of Property

**KING CO., WA**  
 County and State

roads, blocks, and lots within the historic district. These plats, located at the then north edge of the city, benefited from proximity to the streetcar line along Interlake Avenue N at the west edge of the historic district, along with the Meridian Line a half block south of the district along N and NE 45th Street, as well as proximity to places of employment. Their distinguishing characteristics reflect the multiple development influences shaping the spatial character of the historic district, and the transitional role of the 1891 Baltimore Addition between the west and east platting patterns. All utilize a grid layout. Collectively they convey shifts in density through lot sizes and a change in circulation patterns to connect with neighborhood arterials to support the use of automobiles through changes in block orientation (north-south versus east-west) and the use of rounded block ends at arterial connections. Established from 1888 to 1922, these eight plats represent waves of development optimism, associated first with the anticipated annexation of land between Lake Union and Green Lake and later with the development of the streetcar system and the influence of the nearby University of Washington campus. Plat filers include a range of property owners, including single or husband-wife landowners and real estate development corporations. (See Sec. 8 for additional historic context).

Table 5. Plats

NAME	YEAR RECORDED	DISTINGUISHING CHARACTERISTICS
<b>Porterfield's Addition</b>	1888	<ul style="list-style-type: none"> <li>• Platted by Anderson Bertrand and Company. T. J. and Elizabeth E.</li> <li>• Porterfield were the fee simple owners of the land.</li> <li>• Continues the east-west orientation of blocks characteristic of plats south of Woodland Park and west into the Ballard neighborhood.</li> <li>• Continues the 60-foot road widths, 80-foot width of N 46<sup>th</sup> Street, and street names (different from existing) established by the 1887 Woodland Addition to Salmon Bay City to the west of this addition and shaped the street widths characteristic of the west half of the historic district. In contrast to the 80-foot width of N 46<sup>th</sup> Street, the main commercial corridor, N and NE 45 Streets, was platted at a width of only 70-feet.</li> <li>• Establishes the 200- by 300-foot block sizes without alleys and lot orientation fronting the east-west streets that is characteristic of the west half of the historic district.</li> <li>• Utilizes larger 50- by 100-foot lots within the historic district. Single-family dwellings typically occupy a single lot.</li> </ul>
<b>Lake Union 2<sup>nd</sup> Addition</b>	1889	<ul style="list-style-type: none"> <li>• Platted by Elisha Peyre (E. P.) and Sarah T. Ferry, fee simple owners of the land. E. P. Ferry was the first governor of the State of Washington, two-term governor of the Washington Territory and appointed by President Grant to the position of Surveyor General of the Washington Territory. E. P. Ferry, his wife Sarah Ferry and daughter Lizzie Ferry (future Eliza Leary) were active in the establishment of charities to serve needy residents of pioneer Seattle.</li> <li>• W. T. D. Jones and Company were the sole agents of lot sales. Continues road and block widths, lot orientation, street names, and absence of alleys established in the Porterfield's Addition rather than following the alignment of the 1883 Lake Union Addition to the south.</li> <li>• Establishes smaller 25-foot lot widths for a higher lot density that is a defining characteristic of the west and central portions of the historic district.</li> <li>• Utilized longer 300-foot outer block lengths, with shorter inner 250-foot blocks.</li> <li>• Single and multiple family dwellings typically span two or more lots.</li> </ul>

**WALLINGFORD-MERIDIAN STREETCAR HISTORIC DISTRICT**  
Name of Property

**KING CO., WA**  
County and State

NAME	YEAR RECORDED	DISTINGUISHING CHARACTERISTICS
<b>Baltimore Addition</b>	1891	<ul style="list-style-type: none"> <li>• Platted by attorney M. L. Baer, William S. Baer, Charles D. Baer, and attorney Frank Burns, Jr., all of Seattle, as well as James F. and Katherine P. McCabe of Baltimore, Maryland.</li> <li>• Continues the north-south block orientation that extends inland from Lake Union and is characteristic of the central and south portions of the Wallingford and Fremont neighborhoods, and the University District.</li> <li>• Shifts the alignment of N 46<sup>th</sup> Street north and reduced the right of way width to 66 feet.</li> <li>• Continues the denser 25-foot lot widths and absence of alleys of the Lake Union 2<sup>nd</sup> Addition.</li> <li>• Introduces the change in block orientation that set the pattern for platting of the historic district's east portion. This change utilizes longer (387 feet) and slightly narrower (228 feet) blocks oriented lengthwise north/south with fewer cross streets versus the sizes and east/west orientations of blocks in the Porterfield's and Lake Union 2nd Additions.</li> <li>• Single and multiple family dwellings typically span two or more lots.</li> </ul>
<b>University Hill Tracts</b>	1905	<ul style="list-style-type: none"> <li>• Platted by the University Investment Co., with Charles M. Best and Norman J. Buren, president and secretary of the corporation, respectively.</li> <li>• Introduces the use of curved block corners within the historic district to accommodate automobile traffic flow transitioning from NE 46<sup>th</sup> to NE 47<sup>th</sup> Street (reflecting the street's east-west circulation role despite the reduction in width and alignment change introduced by the Baltimore Addition) and from Thackeray Place NE to NE 50<sup>th</sup> Street (reflecting the arterial role of NE 50<sup>th</sup> Street versus the commercial corridor role of NE 45<sup>th</sup> Street).</li> <li>• Introduces the narrower (204-foot) and longer (600-foot) blocks characteristic of the east portion of the historic district.</li> <li>• Establishes north-south pedestrian and vehicular circulation patterns connecting to the bounding arterials with only a single east-west roadway bisecting the blocks, compared to the four east-west roadways in the same space in the two plats west of Meridian Avenue N.</li> <li>• Establishes a lower lot density (typically 40 feet wide versus the 25-foot width in the western plats) that was continued in subsequent plats generally east of Eastern Avenue N and contrasted with lot sizes in the central and west portions of the historic district.</li> <li>• Creates a narrow 30-foot-wide 1<sup>st</sup> Avenue NE right of way between this plat and the Baltimore Addition to maximize block size.</li> <li>• Orients lots in the south lots towards NE 45<sup>th</sup> Street in the blocks between 1<sup>st</sup> Avenue NE and Thackeray Place NE.</li> <li>• Continues the absence of alleys.</li> <li>• Single-family dwellings typically span only one lot.</li> </ul>

**WALLINGFORD-MERIDIAN STREETCAR HISTORIC DISTRICT**  
Name of Property

**KING CO., WA**  
County and State

NAME	YEAR RECORDED	DISTINGUISHING CHARACTERISTICS
<b>University Hill Tract 2<sup>nd</sup> Division</b>	1906	<ul style="list-style-type: none"> <li>Platted by the University Investment Co., with Charles M. Best and Norman J. Buren, president and secretary of the corporation, respectively.</li> <li>Continues the block, lot, and street sizes as University Hill Tracts, absence of alleys, and included rounded corners at streets connecting to NE 50<sup>th</sup> Street.</li> </ul>
<b>Daniels University Grove</b>	1907	<ul style="list-style-type: none"> <li>Platted by Leonard and Annie S. Daniels, fee simple owners of the land. Leonard worked in real estate.</li> <li>Continued the block, lot, and street sizes as the University Hill Tracts.</li> <li>Introduced the use of alleys, separating residential lots from the larger commercial lots along NE 45<sup>th</sup> Street and bisecting the length of the easternmost block.</li> </ul>
<b>Smith's University Addition</b>	1908	<ul style="list-style-type: none"> <li>Platted by Ira Bronson with the Title Trust Company, with C. S. Wiley Vice President, L. I. Gregory, secretary.</li> <li>Continues the block, lot, and street sizes as the University Hill Tracts.</li> <li>Shifts the alignment of Eastern Avenue N slightly west to fit a wider block on the east side that was platted as full width lots but subdivided by 1909 into double lots without an alley. This layout also allowed 1<sup>st</sup> Avenue NE to widen to a 40-foot right of way.</li> <li>Utilizes alleys (12 and 15 foot wide) as buffers along the south (from the Baltimore Addition) and west (from the future Hope Addition).</li> <li>Single-family dwellings typically span only one lot.</li> </ul>
<b>Hope Addition</b>	1922	<ul style="list-style-type: none"> <li>Platted by The Good Shepherd of Seattle, with Sister M. Emiliana and Sister M. Helen, President and Secretary of the corporation.</li> <li>Continues the block, lot, and street sizes as the University Hill Tracts.</li> <li>Shifts lots at the north end, platted originally to front Sunnyside Avenue N, to front N 50<sup>th</sup> Street by ca. 1921 based on existing buildings.</li> <li>Utilizes an alley as a buffer along the south from the Baltimore Addition.</li> <li>Single-family dwellings typically span only one lot.</li> </ul>

**Streets and Sidewalks**

Streets within the plats remain at the widths established in the plats and are paved with concrete and have concrete curbs. Parallel parking extends along both sides of most streets. Driveway curb cuts provide access to basement and detached garages (located both to the front and to the side of buildings).

Planting strip widths vary by plat and generally increased in width with the more recent plats. Planting strips consist of a plantable area within the public right of way between the street curb and sidewalk, which based on historic aerials and existing planting strips, tends to consist of lawn, street trees, and small ornamental plantings (shrubs, annuals, and perennials) reflecting property owner preferences. The two west plats, Porterfield's and Lake Union 2<sup>nd</sup> Addition have 7-foot-wide strips along most streets except for 4-foot-wide strips along the N 50<sup>th</sup> Street arterial. The Baltimore Addition has 8-foot-wide strips. The two easternmost plats, University Hill Tract 2<sup>nd</sup> Division and Daniel's University Grove, along 4<sup>th</sup> and 5<sup>th</sup> Avenues NE and NE 47<sup>th</sup> Street (including within the University Hill Tracts), retain 9-foot-wide planting strips. The north/south avenues within the University Hill Tracts, as well as Latona Avenue NE within the easternmost two plats have 10- to 11-



WALLINGFORD-MERIDIAN STREETCAR HISTORIC DISTRICT  
Name of Property

KING CO., WA  
County and State

foot-wide strips. The Smith's University and Hope Additions both have 12-foot-wide planting strips. This width extends south along Sunnyside Avenue NE into the Baltimore Addition.

### **Alleys**

Alleys occur only within the east portion of the historic district and with limited usage. All are paved with concrete and provide access to some garages. The 1907 Daniel's University Grove introduced the use of alleys (14 feet wide), separating residential from the larger commercial lots along NE 45<sup>th</sup> Street and bisecting the length of the easternmost block. The 1908 Smith's University Addition utilizes alleys (12 and 15 foot wide) as buffers along the south (from the Baltimore Addition) and west (from the future Hope Addition). The 1922 Hope Addition utilizes an alley as a buffer from the Baltimore Addition to the south.

### **Trees**

Street trees within the planting strips are a characteristic visual feature within the historic district contributing to the spatial character of the residential setting. Substantial tree canopies are evident in 1929 historic aerials supporting the early role of street trees as a visual feature within the historic district. There is not a specific genus characteristic of the historic district, nor was a comprehensive planting effort by developers or residents identified.

### **Styles**

The application and often interpretation by contractor/builders of architectural styles convey prevailing national and city-wide trends at the time of construction, in addition to adaptations to the socio-economic conditions of building owners and the targeted middle-income homebuyer. Buildings built within the period of significance for the historic district reflect the characteristics of the Late 19<sup>th</sup> and 20<sup>th</sup> Century Revivals (Colonial, Classical, and Tudor Revivals and Tudor Composites), and the Late 19<sup>th</sup> and Early 20<sup>th</sup> Century American Movement (Craftsman) styles. These comprise the major styles defining the overall architectural character of the neighborhood based on the volume of their use. Other styles can be found in the historic district, including Collegiate Gothic, Queen Anne – Free Classic, Neo-Classical, and Prairie but were used on just a few buildings.

The high volume of buildings designed in the Craftsman style shapes the visual characteristics of the historic district. Classical Revival, Colonial Revival (inclusive Dutch Colonial Revival), and Tudor Revival hold a secondary role in shaping the architectural character of the historic district. Buildings identified as not having a style were not designed per a specific style but may exhibit influences from one or more styles or support a specific function rather than a specific style. Houses identified as having no style may also have been so significantly altered that cladding, window, and/or plan changes have obscured or removed original stylistic elements.

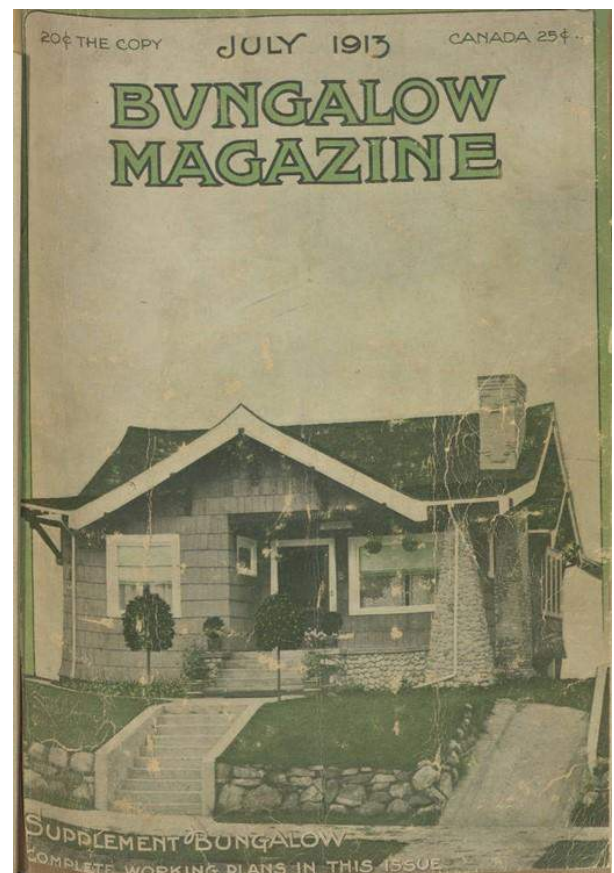


Fig. 2. Jud Yoho's Craftsman-style residence at 4718 2nd Ave. NE, Bungalow Magazine, July 1913.

WALLINGFORD-MERIDIAN STREETCAR HISTORIC DISTRICT  
Name of Property

KING CO., WA  
County and State

### Classical Revival

The Classical Revival style with 94 extant buildings built in this style is the second most common style used within the historic district. The style peaked in use within the historic district between 1906 and 1912.

Classical Revival is a transitional architectural style popular during the early decades of the 20th century, incorporating Classical details on bungalows, foursquares, and workingman's foursquares. These classical details include cornice or eave returns, classical columns or pillars, and modillions. Classical Revival houses may lack the symmetry that is typically seen on Colonial Revival buildings. Good examples include: 4532 2nd Avenue NE (built 1908), and 1906 N 49th Street (built ca. 1916).



Fig. 3. Classical Revival-style cottage at 1906 N 49th St., King County Assessor, 1939



Fig. 4. Classical Revival-style cottage at 4632 2nd Ave. N, King County Assessor, 1939

### Colonial Revival

The Colonial Revival style was moderately used within the historic district with 68 extant buildings built in the style. Use of the style within the historic district started by 1910, but was not consistent in popularity, with 1 to 3 buildings built in a year followed by no use of the style for a couple of years, then another 1 to 3 buildings built in the style. Use of the style peaked between 1919 and 1925 with the highest number built in 1920.



Fig. 5. Colonial Revival-style cottage at 1821 N 50th St., King County Assessor, 1939



Fig. 6. Colonial Revival-style residence at 4516 Latona Ave. N, King County Assessor, 1939

WALLINGFORD-MERIDIAN STREETCAR HISTORIC DISTRICT  
Name of Property

KING CO., WA  
County and State

Colonial Revival has been a popular architectural style in the United States, particularly on residential buildings. Colonial Revival houses imitate, but do not directly copy, the Federal and Georgian-style buildings constructed during the United States' early years. Colonial Revival houses typically feature symmetrical main facades, double-hung windows, side gabled or hipped roofs, cornices with dentils or modillions, and prominent front entrances that may feature sidelights, fanlights, pediments, and columned porches or porticos. Colonial Revival houses may be two to two and a half stories or may be single-story bungalows. Good examples of Colonial Revival bungalows include: 1821 N 50th Street (built ca. 1926) and 4533 Latona Avenue NE (built ca. 1921). Good examples of larger Colonial Revival houses include: 4547 4th Avenue NE (built ca. 1915), 4558 Latona Avenue NE (built ca. 1921), and 4516 Latona Avenue NE (built ca. 1916).

### Craftsman

The Craftsman style is the most common style used within the historic district with 315 extant buildings built using the style. The first large scale use of the style occurred in 1906. Following a brief drop over the next two years, the style then peaked in use between 1909 and 1916. Following another brief lull, the style returned to popularity between 1918 and 1922. Use of the style, based on extant buildings, tapered off to just one building built per year in the late 1920s and by 1928 was no longer in use.

The wide-spread application of the Craftsman style within the historic district between 1906 and 1927 represents a significant and distinguishable entity whose components lack individual distinction. This is supported in part by a broader understanding of the builders involved in constructing houses within the historic district versus the architects designing buildings. The historic district represents a wide range of interpretations of the Craftsman style and the work of multiple builders. The simplicity and artistry of these buildings harmonized into an affordable house design providing style, convenience, and simplicity within the reach of many middle income families. The Craftsman style is the first major architectural style movement that originated on the West Coast. California architects Charles and Henry Greene are credited with popularizing the style in the beginning of the 20th century, and it dominated residential architecture from 1905 until the 1930s throughout the country. The Craftsman style embraced the idea that design should suggest the labor of a master craftsman, so design elements associated with it are often derived from structural elements of the building.

This style relies heavily on showing exposed framing and bracing, heaviness of design elements such as box posts, low-pitched roofs, and asymmetrical facades. Roof forms include clipped, cross, front, hip, and side gable, typically with knee braces and prominent bargeboards at the gable ends and exposed rafter ends at the eaves.



Fig. 7. Craftsman-style residence at 1422 N 46th St., King County Assessor, 1939

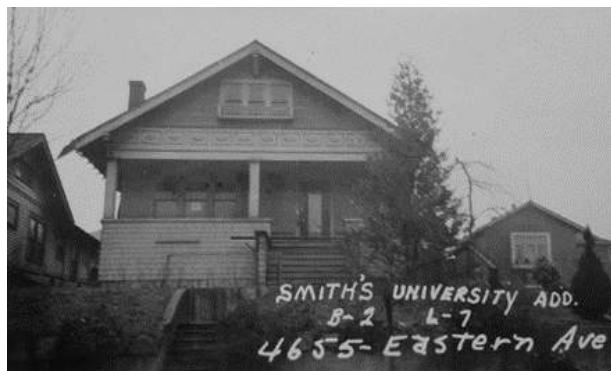


Fig. 8. Craftsman-style residence at 4655 Eastern Ave. N, King County Assessor, 1939

WALLINGFORD-MERIDIAN STREETCAR HISTORIC DISTRICT  
Name of Property

KING CO., WA  
County and State

Windows are usually double-hung, single or grouped in parts of two or three, with stile extensions, exterior casings, and sills. Specialized windows include small windows flanking chimneys or at oriels and often included decorative shapes (such as oval), leading, or stained glass. Wood is the primary exterior cladding material, typically horizontal board with some shingles, and river cobble, stone, or brick utilized on porch bases and chimneys. Porches on the front of the house provide an important visual and functional feature, that can project beyond or be incorporated under the main roof. They typically exhibit square columns, often with tapered bases. The popularity of the Craftsman and its associated bungalow form spread—both locally and nationally—with the publication of plan books like Wallingford resident Jud Yoho's *Craftsman Bungalows* (1916).

The Craftsman style was utilized on both small bungalows and larger houses and there are a number of different types present within the neighborhood. A 1-story hipped roof bungalow example is 2120 N 46th Street (built ca. 1911). A front gabled bungalow example with a partial-width porch is 4616 Woodlawn Ave N (built ca. 1911). A front gabled bungalow example with a full-width porch is 4747 Latona Avenue NE (built ca. 1912). A side gabled bungalow example with a partial-width porch is 4517 Latona Avenue NE (built ca. 1908). A side gabled bungalow example with a full-width recessed porch is 4741 Latona Avenue NE (built ca. 1908). Larger Craftsman examples include 4535 4th Avenue NE (built ca. 1907) and 4611 Eastern Avenue N (built ca. 1910). Examples of more Arts and Crafts-leaning design in the neighborhood are 4616 Meridian Avenue N (built ca. 1911) and 4604 Eastern Ave N (built ca. 1906).

### Dutch Colonial Revival

The Dutch Colonial Revival style, a subtype of Colonial Revival was used on 26 extant buildings within the historic district. Based on extant buildings, use of the style within the historic district started by 1905 and continued as 1 to 2 buildings built in the style every couple of years. Use of the style peaked between 1920 and 1923.

The Dutch Colonial Revival style draws on late eighteenth and early nineteenth century Dutch Colonial architecture from former Dutch colonies on the East Coast. In practice within the historic district, the style generally applies to a Colonial Revival style buildings with a gambrel roof. Wood is the primary exterior cladding material, with multi-lite double-hung windows. Dormers are typically gabled or shed roofed. Good examples include: 4524 Latona Avenue NE (built ca. 1912), 4545 Latona Avenue NE (built ca. 1922), and 1722 N 46<sup>th</sup> Street (built ca. 1921).

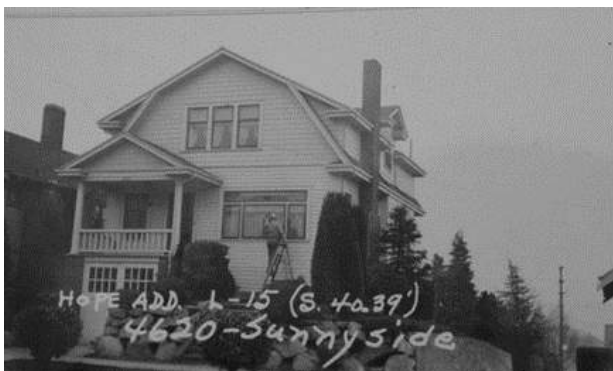


Fig. 9. Dutch Colonial Revival-style residence at 4620 Sunnyside Ave N, King Co. Assessor, 1939



Fig. 10. Dutch Colonial Revival-style residence at 1426 N 47th St., King County Assessor, 1939

WALLINGFORD-MERIDIAN STREETCAR HISTORIC DISTRICT  
Name of Property

KING CO., WA  
County and State

### **Tudor Revival and Tudor Composite**

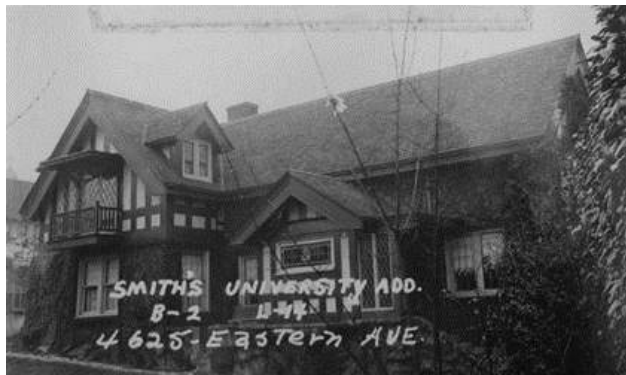
The Tudor Revival style and Tudor Composite sub-type were used on 24 extant buildings within the historic district, with Tudor Composite being the more dominant. Use of the style peaked between 1925 and 1929, with some additional buildings completed in 1930, 1932, and 1936.

The Tudor Revival style loosely interprets the decorative elements of the Jacobean and Elizabethan buildings of the of late Medieval period in England and typically feature a dominant cross-gable on the front facade, steeply pitched roofs, decorative half-timbering, tall narrow windows (often grouped), and massive chimneys. Gable details, patterned brickwork, and round or Tudor arches are also hallmarks of this style.

A subtype of Tudor Revival is Tudor Composite, which blends design elements of Tudor Revival with Colonial Revival. This subtype is larger in scale than the Tudor Cottage subtype and included the use of brick detailing to mimic Palladian window configurations, double front gables, front entrance porticos, and the use of shutters.

Single-family examples of Tudor Revival include: 1917 N 48<sup>th</sup> Street (built ca. 1932), 1422 N 49<sup>th</sup> Street (built ca. 1923), and 4625 Eastern Avenue N (built ca. 1916, designed by Henry Bittman).

Apartment building examples include 1701 N 48<sup>th</sup> Street (built 1929, designed by Harry B. McKnight) and 4515 Burke Avenue N (built 1928, designed by Harry B. McKnight). Good examples of Tudor Composite include: 4903 Woodlawn Avenue N (1925), and 4630 1<sup>st</sup> Avenue NE (1938).



*Fig. 11. Tudor Revival-style residence at 4625 Eastern Ave. N, King County Assessor, 1939*



*Fig. 12. Tudor Composite-style court apartments at 1701 N 48th St., King County Assessor, 1939*

WALLINGFORD-MERIDIAN STREETCAR HISTORIC DISTRICT

KING CO., WA

Name of Property

County and State

**Residential Development Trends**

Single and multiple family residential buildings comprise a defining characteristic of the historic district reflecting architectural styles and kit houses popular in the Pacific Northwest during the first decades of the twentieth century. The building forms, styles, and associated garages convey the pattern of development and density associated with a period of intense growth in the city of Seattle.

**Single-family**

Characteristic of the different platting periods, house placement relative to underlying lots differs between the older 1880s and 1890s plats and those recorded in the 1900s. Houses in the older plats in the west and central portion of the historic district span multiple lots while houses in the east portion typically reside within a single lot. House setbacks throughout the historic district ranges from less than 10-feet to just over 20-feet from the front property line. Setback amounts frequently vary slightly within blocks.

Single-family house conversions to multiple family dwellings both within and outside the period of significance provided an important mechanism for increasing density within the historic district. Census records from 1910 through 1940 indicate conversions within the period of significance started between 1910 and 1920, increasing households to two or more for multiple houses within the historic district. Examples include 4533 Eastern Avenue N (built ca. 1906) functioning as multifamily by the 1940 census; and 4534 Thackeray Place NE (built ca. 1909), multifamily by the 1920 census.

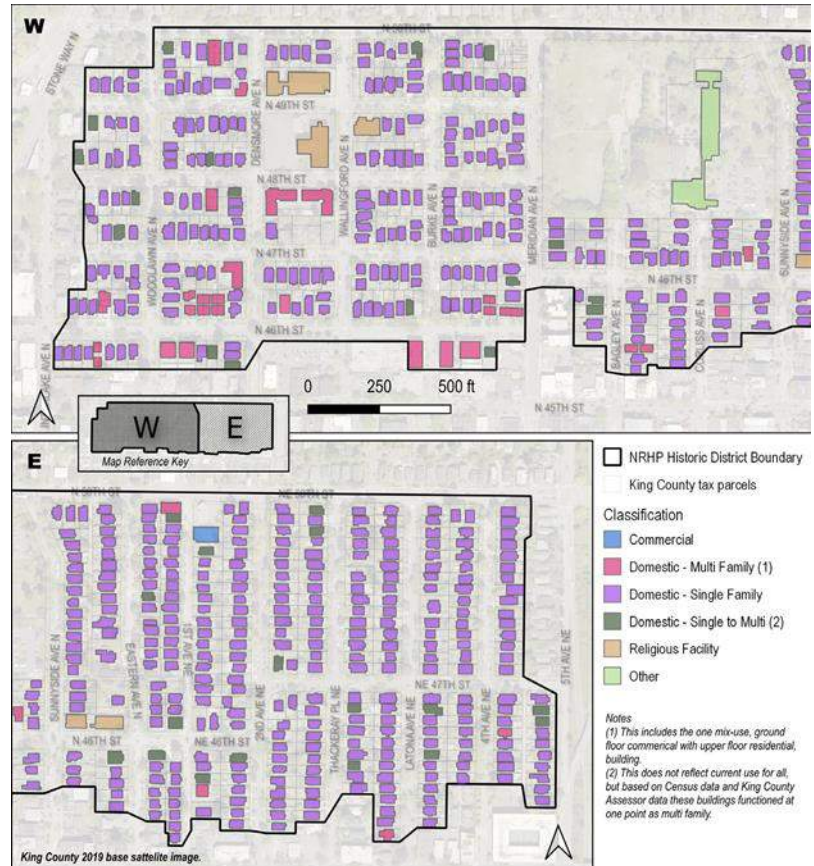


Fig. 13. Map showing building classification within the historic district.

Houses throughout the historic district orient towards the street with a narrow front yard and modest to large back yards depending on house size. Houses are typically centered within their respective parcel(s) or placed with a 5-foot set back between adjacent buildings characteristic of a denser urban setting.

Due to the near absence of alleys, garages occur both in front of and behind houses are being included in the contributing and noncontributing resource count. Front garages occur at lots with minimal to no back yards, are typically single vehicle and concrete in construction with flat roofs. Curb cuts and a short driveway crossing the sidewalk provide access. Garages behind houses are typically accessed via long driveways from the street, except in the rare instances of alley access, and of wood frame construction with mostly flat, gable, or hipped roofs.

Building design and materials predominately reflect the characteristics of the late 19th and 20<sup>th</sup> Century Revival (Classical Revival), or the early use of Late 19<sup>th</sup> and Early 20<sup>th</sup> Century American Movement (Craftsman) styles. The frequency of use of the Classical Revival and Craftsman architectural styles characterize this

WALLINGFORD-MERIDIAN STREETCAR HISTORIC DISTRICT  
Name of Property

KING CO., WA  
County and State

period. The rising popularity of the Craftsman style, as evident in buildings within the neighborhood during this period, and often coupled with the bungalow form, rose significantly in use during the 1910s.

Building forms are single-family and include more affordable and efficiently built forms such as the American Foursquare, or bungalow. The single-family forms relate to the prevailing styles employed in the neighborhood during the period of significance, national and city-wide housing trends, and the role of middle-income home buyers in purchasing houses within the historic district.

The American Foursquare or Foursquare became popular in residential construction in the early 20th century. Foursquare houses are large, boxy, two-story houses. They have hipped roofs and may have broad eaves. They typically have a symmetrical primary facade, but the entrance may be centered or off to one side. Porches—partial-width, full-width, or wraparound—are also key elements of the form. Foursquare houses may have ornamentation that reflects an architectural style. Good examples include: 4700 Wallingford Avenue N (built ca. 1917) and 4540 Latona Avenue NE (built ca. 1912).

The bungalow was a popular housing form in the United States beginning in the early 1900s. These houses were small, compact, and affordable, opening home ownership to a wider segment of the population. The form continued in popularity through the 1920s and even into the early 1930s. Bungalows can range in style from Craftsman and Colonial Revival to Mission Revival, with even Tudor Revival examples. They are typically one to one-and-a-half stories and have gable or hipped roofs. Gable roof forms include the side gable, front gable, cross gable, or double or triple front facing gable roofs. Bungalow examples include: 4655 Eastern Avenue N (built ca. 1915), and 4523 1<sup>st</sup> Avenue NE (built ca. 1915).

Building sizes are modest, with nearly half being one and a half stories with a compact to modest plan size. The next most frequent heights are one and two stories. There are only a few buildings that are two and a half stories in height and one that is three stories. Most houses have a 24- to 28-foot-wide front facade, which on a 40-foot wide allowed for at least a 5 to 6-foot set back at the sides from the property line. Plan depths ranged from 30 to over 45 feet resulting generally in a 900- to 1200-square-foot first floor plan.

Building materials are primarily wood, with wood frame construction, wood windows, siding (clapboard, shingles, tongue and groove board), trim (where existed originally, including water tables, window casings/sills, corner boards, barge boards, and cornice elements), and porch and stoop elements (railings, posts, flooring). Brick and stucco are less common and mostly seen on chimneys. Alterations have introduced aluminum, asbestos, vinyl, and cement fiberboard siding, as well as vinyl windows.

### Multiple Family

Multiple family buildings within the historic district are generally located behind (north) of the commercial core along N and NE 45<sup>th</sup> Street with recent multiple family buildings also extending along Interlake Avenue N. Building forms include low-rise apartment blocks, courtyard apartment, fourplex, and a mixed-use commercial building. Refer to Single-family above for single-family dwellings converted to multiple family use.

The larger apartment blocks, courtyard apartment, and mixed-use buildings span multiple lots with duplexes and fourplexes typically residing within a single lot. Building setbacks throughout the historic district range from less than 10 feet to just over 20 feet from the front property line. Setback amounts frequently vary slightly within blocks.

The five low-rise apartment blocks within the historic district are apartment buildings two to three stories tall with a single, primary entrance for tenants and guests. They are built out to or near the lot lines and span multiple lots and are oriented towards the street. Each unit typically has its own kitchen and bathroom, with

WALLINGFORD-MERIDIAN STREETCAR HISTORIC DISTRICT

KING CO., WA

Name of Property

County and State

units accessed from interior corridors. The main entry and lobby are often highlighted with a high level of ornamentation that is in line with the overall architectural style of the building. Most of these buildings have their own dedicated automobile garage located behind or beneath the building. They occur near the main commercial arterial along N and NE 45<sup>th</sup> Street. These buildings reflect a moderate to high level of investment and were a popular multiple family building form prior to World War II. Examples include 4515 Burke Avenue N (Landon Arms Apartments, built 1928), 1603 N 46<sup>th</sup> Street (Woodlawn Crest Apartments, built ca. 1926), and 1911 N 46<sup>th</sup> Street (Jack-Lan Apartments, built 1929).



Fig. 15. Multi-family apartment building at 4515 Burke Ave. N, King County Assessor, 1939

Building design and materials reflect the characteristics of the early use of Late 19<sup>th</sup> and Early 20<sup>th</sup> Century American Movement (Tudor Revival) styles. The exclusive use of the Tudor Revival architectural style characterizes the low-rise apartment block form and age of construction within the historic district. The popularity of the Tudor Revival style, as evident in buildings, rose significantly in use during the late 1920s.

Building materials are wood frame with brick veneer with some stucco cladding, wood windows, and wood stoop elements (entrances, surrounds). Alterations have introduced some vinyl and aluminum windows.

The courtyard type apartment within the historic district, unlike the low-rise apartment blocks, does not have interior corridors. The apartment consists of two one and a half story buildings arranged around a courtyard with eight living units per building, each with their own kitchen and bathroom. Entrances are individual with shared double return stairwells.

Each unit has front door access and a back door to the central courtyard and parking. The individuality of each entrance is emphasized by a hood. Garages are separate and located behind the buildings. The buildings have an L-shape plan, span multiple lots and are set back 10 feet from the property line similar to surrounding single-family dwellings. A central driveway between the two buildings provides access to the courtyard and two 7-car parking garages. Examples include the Bungalow Courts Apartments at 1701 (built 1930) and 1715 (built 1929) N 48<sup>th</sup> Street.

Building materials are wood frame with brick veneer with some stucco cladding, leaded lite wood windows, and wood stoop elements (entrances, surrounds).

The duplex (flat) building within the historic district is two stories with separate entrances for each of the two-story single-family living units. The single example is 4546 4<sup>th</sup> Avenue NE (built ca. 1923). The building exhibits the same physical features and spatial placement (setback, lot placement) as single-family dwellings within the historic district.

### ***Religious Development***

The religious facilities built within the period of significance include the St. Benedict School (1707 N 49<sup>th</sup> Street, built ca. 1924) and the Elim Swedish Baptist Church (4600 Sunnyside Avenue N, built 1913). The Elim Swedish Baptist Church organized out of the city's First Baptist Church in 1910, and met at temporary quarters until the new church was completed. Although nonresidential, the religious facilities reflected the growing density with the historic district capable of supporting the school and church. Both facilities were expanded post World War II through the construction of an administrative and convent facility, the Benedict House (1700 N 49<sup>th</sup> Street, built ca. 1954) and new church (1805 N 49<sup>th</sup> Street, built ca. 1959), and an added educational



WALLINGFORD-MERIDIAN STREETCAR HISTORIC DISTRICT  
Name of Property

KING CO., WA  
County and State

building supporting the Elim Swedish Baptist Church at 2410 N 46<sup>th</sup> Street (built 1964, designed by Durham, Anderson & Freed).

### **Explanation of Contributing and Noncontributing Resources**

Overall, the historic district has a moderately high level of historic integrity.

- Historic contributing buildings are those built within the period of significance that retain integrity and convey the historical associations for which the historic district is historically significant.
- Historic noncontributing are those buildings that are 50-years or older but have experienced substantial alterations to their exterior visual character or were built outside of the period of significance.
- Non-historic, noncontributing are those buildings that are less than 50-years of age and built outside of the period of significance.

In assessing buildings key elements conveying integrity of design, materials, and workmanship were assessed from the public right of way since the visual character evident when walking or driving along the streets is the measure of the integrity of feeling within the historic district. The primary character-defining features evaluated on each building were windows, cladding (including trim and detailing), and plan (encompassing the full building envelope) based on what was visible from the public right of way.

Secondary detached buildings that are substantial in size and scale, predominately garages, were evaluated as part of each property since they are functionally related. Attached garages were evaluated as part of the house and not treated as a separate detached structure. Garages were identified as contributing if they retained their plan, garage door opening (the door could have been replaced), and some original cladding materials. Flat roof garages with added railings for rooftop decks were considered contributing as the essential form and function remained legible.

WALLINGFORD-MERIDIAN STREETCAR HISTORIC DISTRICT  
 Name of Property

KING CO., WA  
 County and State

**Classification** all primary buildings within the historic district and the status of associated secondary buildings.

Number Count	Full Address	Year Built	Status	Style	Secondary Building	Classification
1	4505 1ST AVE NE	1925	Contributing	Craftsman	None	Domestic - Single-family
2	4511 1ST AVE NE	1912	Contributing	Craftsman	None	Domestic - Single-family
3	4515 1ST AVE NE	1912	Non Contributing	No Style	None	Domestic - Single-family
4	4516 1ST AVE NE	1912	Contributing	Classical Revival	Contributing	Domestic - Single-family
5	4519 1ST AVE NE	1908	Contributing	Craftsman	None	Domestic - Single-family
6	4521 1ST AVE NE	1911	Contributing	Craftsman	None	Domestic - Single-family
7	4526 1ST AVE NE	1914	Non Contributing	No Style	Non Contributing	Domestic - Multi Family
8	4527 1ST AVE NE	1924	Contributing	Colonial Revival	None	Domestic - Single-family
9	4528 1ST AVE NE	1914	Contributing	Craftsman	Contributing	Domestic - Single to Multi
10	4529 1ST AVE NE	1910	Non Contributing	Craftsman	None	Domestic - Single-family
11	4532 1ST AVE NE	1915	Contributing	Craftsman	None	Domestic - Single-family
12	4603 1ST AVE NE	1906	Contributing	Craftsman	None	Domestic - Single to Multi
13	4607 1ST AVE NE	1910	Contributing	Craftsman	None	Domestic - Single-family
14	4608 1ST AVE NE	1911	Non Contributing	Minimal Traditional	None	Domestic - Single-family
15	4611 1ST AVE NE	1916	Non Contributing	Craftsman	Non Contributing	Domestic - Single-family
16	4614 1ST AVE NE	1912	Non Contributing	Craftsman	Non Contributing	Domestic - Single-family
17	4618 1ST AVE NE	1914	Non Contributing	No Style	None	Domestic - Single-family
18	4622 1ST AVE NE	1921	Contributing	Craftsman	Contributing	Domestic - Single-family
19	4623 1ST AVE NE	1914	Contributing	Craftsman	None	Domestic - Single-family
20	4626 1ST AVE NE	1928	Contributing	Tudor Composite	None	Domestic - Single-family

WALLINGFORD-MERIDIAN STREETCAR HISTORIC DISTRICT  
Name of Property

KING CO., WA  
County and State

Number Count	Full Address	Year Built	Status	Style	Secondary Building	Classification
21	4627 1ST AVE NE	1909	Contributing	Craftsman	None	Domestic - Single-family
22	4630 1ST AVE NE	1928	Contributing	Tudor Composite	None	Domestic - Single-family
23	4631 1ST AVE NE	1910	Contributing	Craftsman	None	Domestic - Single-family
24	4632 1ST AVE NE	1909	Contributing	Craftsman	None	Domestic - Single-family
25	4635 1ST AVE NE	1910	Contributing	Craftsman	None	Domestic - Single-family
26	4638 1ST AVE NE	1922	Non Contributing	No Style	Non Contributing	Domestic - Single-family
27	4639 1ST AVE NE	1908	Non Contributing	Craftsman	None	Domestic - Single-family
28	4642 1ST AVE NE	1918	Non Contributing	Craftsman	None	Domestic - Single-family
29	4645 1ST AVE NE	1909	Contributing	Craftsman	None	Domestic - Single-family
30	4646 1ST AVE NE	1916	Contributing	Craftsman	Contributing	Domestic - Single-family
31	4647 1ST AVE NE	1910	Contributing	Craftsman	None	Domestic - Single-family
32	4650 1ST AVE NE	1915	Contributing	No Style	Non Contributing	Domestic - Single-family
33	4651 1ST AVE NE	1909	Contributing	Craftsman	None	Domestic - Single-family
34	4652 1ST AVE NE	1916	Contributing	Craftsman	Contributing	Domestic - Single-family
35	4656 1ST AVE NE	1930	Contributing	Colonial Revival	Non Contributing	Domestic - Single-family
36	4657 1ST AVE NE	1909	Contributing	Craftsman	Contributing	Domestic - Single-family
37	4659 1ST AVE NE	1915	Contributing	Craftsman	Non Contributing	Domestic - Single-family
38	4663 1ST AVE NE	1914	Contributing	Craftsman	None	Domestic - Single-family
39	4664 1ST AVE NE	1930	Contributing	Classical Revival	None	Domestic - Single to Multi
40	4669 1ST AVE NE	1909	Contributing	Craftsman	None	Domestic - Single-family
41	4673 1ST AVE NE	1909	Contributing	Craftsman	None	Domestic - Single-family

WALLINGFORD-MERIDIAN STREETCAR HISTORIC DISTRICT  
Name of Property

KING CO., WA  
County and State

Number Count	Full Address	Year Built	Status	Style	Secondary Building	Classification
42	4675 1ST AVE NE	1909	Non Contributing	Craftsman	None	Domestic - Single to Multi
43	4510 2ND AVE NE	1906	Contributing	Dutch Colonial Revival	None	Domestic - Single-family
44	4513 2ND AVE NE	1909	Contributing	Craftsman	Non Contributing	Domestic - Single-family
45	4516 2ND AVE NE	1911	Contributing	Craftsman	None	Domestic - Single-family
46	4517 2ND AVE NE	1909	Contributing	Classical Revival	None	Domestic - Single-family
47	4520 2ND AVE NE	1921	Non Contributing	Craftsman	Non Contributing	Domestic - Single-family
48	4521 2ND AVE NE	1923	Contributing	Craftsman	None	Domestic - Single-family
49	4524 2ND AVE NE	1920	Contributing	Craftsman	None	Domestic - Single-family
50	4525 2ND AVE NE	1921	Non Contributing	Colonial Revival	Non Contributing	Domestic - Single-family
51	4527 2ND AVE NE	1922	Contributing	Dutch Colonial Revival	Contributing	Domestic - Single-family
52	4528 2ND AVE NE	1920	Contributing	Craftsman	None	Domestic - Single-family
53	4532 2ND AVE NE	1908	Contributing	Classical Revival	None	Domestic - Single-family
54	4533 2ND AVE NE	1923	Contributing	Craftsman	Contributing	Domestic - Single-family
55	4536 2ND AVE NE	1906	Contributing	Classical Revival	None	Domestic - Single-family
56	4537 2ND AVE NE	1918	Contributing	Craftsman	Non Contributing	Domestic - Single to Multi
57	4540 2ND AVE NE	1916	Contributing	Colonial Revival	Non Contributing	Domestic - Single-family
58	4544 2ND AVE NE	1911	Contributing	Craftsman	Non Contributing	Domestic - Single-family
59	4602 2ND AVE NE	1988	Non Contributing	No Style	None	Domestic - Single-family
60	4603 2ND AVE NE	1924	Contributing	Dutch Colonial Revival	None	Domestic - Single-family
61	4607 2ND AVE NE	1920	Contributing	Craftsman	None	Domestic - Single-family
62	4611 2ND AVE NE	1910	Non Contributing	Colonial Revival	None	Domestic - Single-family

**WALLINGFORD-MERIDIAN STREETCAR HISTORIC DISTRICT**  
Name of Property

**KING CO., WA**  
County and State

Number Count	Full Address	Year Built	Status	Style	Secondary Building	Classification
63	4615 2ND AVE NE	1907	Contributing	Classical Revival	None	Domestic - Single-family
64	4619 2ND AVE NE	1975	Non Contributing	No Style	None	Domestic - Single-family
65	4703 2ND AVE NE	2021	Non Contributing	No Style	None	Domestic - Single-family
66	4707 2ND AVE NE	1907	Contributing	Craftsman	None	Domestic - Single-family
67	4710 2ND AVE NE	1911	Non Contributing	Craftsman	None	Domestic - Single-family
68	4711 2ND AVE NE	1908	Contributing	Classical Revival	Contributing	Domestic - Single-family
69	4714 2ND AVE NE	1908	Contributing	Craftsman	Contributing	Domestic - Single-family
70	4715 2ND AVE NE	1916	Contributing	Craftsman	Contributing	Domestic - Single-family
71	4718 2ND AVE NE	1911	Contributing	Craftsman	None	Domestic - Single-family
72	4719 2ND AVE NE	1909	Non Contributing	Classical Revival	Non Contributing	Domestic - Single-family
73	4722 2ND AVE NE	1911	Contributing	Craftsman	None	Domestic - Single-family
74	4723 2ND AVE NE	1908	Contributing	Craftsman	Non Contributing	Domestic - Single-family
75	4725 2ND AVE NE	1909	Contributing	Queen Anne - Free Classic	None	Domestic - Single-family
76	4726 2ND AVE NE	1907	Contributing	Classical Revival	None	Domestic - Single-family
77	4729 2ND AVE NE	1921	Contributing	Craftsman	Contributing	Domestic - Single-family
78	4730 2ND AVE NE	1919	Contributing	Craftsman	Non Contributing	Domestic - Single-family
79	4733 2ND AVE NE	1921	Non Contributing	Craftsman	None	Domestic - Single-family
80	4734 2ND AVE NE	1920	Contributing	Colonial Revival	Contributing	Domestic - Single-family
81	4737 2ND AVE NE	1911	Non Contributing	Craftsman	None	Domestic - Single-family
82	4738 2ND AVE NE	1907	Contributing	Craftsman	Contributing	Domestic - Single-family
83	4741 2ND AVE NE	1911	Contributing	Craftsman	Non Contributing	Domestic - Single-family

**WALLINGFORD-MERIDIAN STREETCAR HISTORIC DISTRICT**  
Name of Property

**KING CO., WA**  
County and State

Number Count	Full Address	Year Built	Status	Style	Secondary Building	Classification
84	4742 2ND AVE NE	1907	Contributing	Classical Revival	None	Domestic - Single-family
85	4746 2ND AVE NE	1920	Contributing	Craftsman	Non Contributing	Domestic - Single-family
86	4747 2ND AVE NE	1916	Contributing	Dutch Colonial Revival	Contributing	Domestic - Single-family
87	4750 2ND AVE NE	1920	Contributing	Colonial Revival	Contributing	Domestic - Single-family
88	4751 2ND AVE NE	1920	Contributing	Craftsman	Non Contributing	Domestic - Single-family
89	4753 2ND AVE NE	1919	Contributing	Colonial Revival	Contributing	Domestic - Single-family
90	4754 2ND AVE NE	1910	Contributing	Craftsman	Contributing	Domestic - Single-family
91	4758 2ND AVE NE	1910	Contributing	Craftsman	None	Domestic - Single-family
92	4759 2ND AVE NE	1912	Contributing	Craftsman	None	Domestic - Single-family
93	1401 N 46TH ST	1920	Contributing	Craftsman	None	Domestic - Single-family
94	1405 N 46TH ST	1922	Contributing	Craftsman	Contributing	Domestic - Single-family
95	1406 N 46TH ST	1924	Contributing	Colonial Revival	None	Domestic - Single-family
96	1409 N 46TH ST	1923	Contributing	Classical Revival	Contributing	Domestic - Single-family
97	1410 N 46TH ST	1924	Non Contributing	Craftsman	None	Domestic - Single-family
98	1411 N 46TH ST	1922	Contributing	Craftsman	Contributing	Domestic - Single-family
99	1412 N 46TH ST	1924	Contributing	Colonial Revival	None	Domestic - Single-family
100	1415A N 46TH ST	2020	Non Contributing	No Style	None	Domestic - Multi Family
101	1416 N 46TH ST	2017	Non Contributing	No Style	None	Domestic - Multi Family
102	1415B N 46TH ST	2020	Non Contributing	No Style	None	Domestic - Multi Family
103	1419 N 46TH ST	1920	Contributing	Craftsman	Contributing	Domestic - Single-family
104	1422 N 46TH ST	1919	Contributing	Craftsman	None	Domestic - Single-family

**WALLINGFORD-MERIDIAN STREETCAR HISTORIC DISTRICT**  
Name of Property

**KING CO., WA**  
County and State

Number Count	Full Address	Year Built	Status	Style	Secondary Building	Classification
105	1425 N 46TH ST	1918	Contributing	Craftsman	Non Contributing	Domestic - Single-family
106	1428 N 46TH ST	1921	Contributing	Colonial Revival	None	Domestic - Single-family
107	1603 N 46TH ST	1926	Contributing	Tudor Revival	Contributing	Domestic - Multi Family
108	1606 N 46TH ST	2013	Non Contributing	No Style	None	Domestic - Multi Family
109	1609 N 46TH ST	1925	Contributing	Tudor Revival	Contributing	Domestic - Multi Family
110	1610 N 46TH ST	2013	Non Contributing	No Style	None	Domestic - Multi Family
111	1614 N 46TH ST	2008	Non Contributing	No Style	None	Domestic - Multi Family
112	1615 N 46TH ST	1914	Contributing	Craftsman	None	Domestic - Single-family
113	1616 N 46TH ST	2008	Non Contributing	No Style	None	Domestic - Multi Family
114	1618 N 46TH ST	2008	Non Contributing	No Style	None	Domestic - Multi Family
115	1619 N 46TH ST	1914	Contributing	Craftsman	None	Domestic - Single to Multi
116	1620 N 46TH ST	2008	Non Contributing	No Style	None	Domestic - Multi Family
117	1624 N 46TH ST	1922	Contributing	Dutch Colonial Revival	None	Domestic - Single-family
118	1702 N 46TH ST	1908	Contributing	Classical Revival	None	Domestic - Single-family
119	1706 N 46TH ST	1966	Non Contributing	Modern	None	Domestic - Multi Family
120	1710 N 46TH ST	1919	Contributing	Craftsman	Non Contributing	Domestic - Single-family
121	1716 N 46TH ST	1921	Contributing	Colonial Revival	None	Domestic - Single-family
122	1722 N 46TH ST	1921	Contributing	Dutch Colonial Revival	Contributing	Domestic - Single-family
123	1800 N 46TH ST	1918	Contributing	Classical Revival	None	Domestic - Single-family
124	1804 N 46TH ST	1918	Non Contributing	Craftsman	None	Domestic - Single-family
125	1808 N 46TH ST	1952	Non Contributing	Modern	Non Contributing	Domestic - Single-family

**WALLINGFORD-MERIDIAN STREETCAR HISTORIC DISTRICT**  
Name of Property

**KING CO., WA**  
County and State

Number Count	Full Address	Year Built	Status	Style	Secondary Building	Classification
126	1812 N 46TH ST	1918	Contributing	Craftsman	Contributing	Domestic - Single-family
127	1814 N 46TH ST	1910	Non Contributing	Classical Revival	None	Domestic - Single-family
128	1818 N 46TH ST	1910	Non Contributing	No Style	None	Domestic - Single to Multi
129	1902 N 46TH ST	1914	Contributing	Craftsman	None	Domestic - Single-family
130	1903 N 46TH ST	1929	Contributing	Tudor Revival	None	Domestic - Multi Family
131	1904 N 46TH ST	1914	Contributing	Craftsman	Non Contributing	Domestic - Single-family
132	1908 N 46TH ST	1914	Contributing	Craftsman	None	Domestic - Single-family
133	1911 N 46TH ST	1929	Contributing	Tudor Revival	Contributing	Domestic - Multi Family
134	1912 N 46TH ST	1914	Contributing	Craftsman	None	Domestic - Single-family
135	1916 N 46TH ST	2008	Non Contributing	No Style	None	Domestic - Multi Family
136	1917 N 46TH ST	1913	Contributing	Craftsman	None	Domestic - Single to Multi
137	1918 N 46TH ST	2008	Non Contributing	No Style	None	Domestic - Multi Family
138	1920 N 46TH ST	2007	Non Contributing	No Style	None	Domestic - Multi Family
139	2112 N 46TH ST	2013	Non Contributing	No Style	None	Domestic - Single-family
140	2115 N 46TH ST	1924	Contributing	Classical Revival	None	Domestic - Single-family
141	2116 N 46TH ST	1911	Non Contributing	Craftsman	None	Domestic - Single-family
142	2120 N 46TH ST	1911	Contributing	Craftsman	None	Domestic - Single-family
143	2208 N 46TH ST	1928	Non Contributing	No Style	None	Domestic - Single-family
144	2212 N 46TH ST	1915	Contributing	Craftsman	None	Domestic - Single-family
145	2215 N 46TH ST	1985	Non Contributing	No Style	None	Domestic - Single-family
146	2216 N 46TH ST	1910	Non Contributing	Craftsman	None	Domestic - Single-family



**WALLINGFORD-MERIDIAN STREETCAR HISTORIC DISTRICT**  
Name of Property

**KING CO., WA**  
County and State

Number Count	Full Address	Year Built	Status	Style	Secondary Building	Classification
147	2219 N 46TH ST	1914	Contributing	Craftsman	None	Domestic - Single-family
148	2220 N 46TH ST	1911	Contributing	Craftsman	None	Domestic - Single-family
149	2302 N 46TH ST	1911	Contributing	Classical Revival	None	Domestic - Single-family
150	2306 N 46TH ST	1905	Contributing	Classical Revival	None	Domestic - Single-family
151	2310 N 46TH ST	1906	Non Contributing	Classical Revival	None	Domestic - Single-family
152	2312 N 46TH ST	1963	Non Contributing	Modern	None	Domestic - Multi Family
153	2410 N 46TH ST	1962	Non Contributing	Modern	None	Religious Facility
154	102 NE 46TH ST	1912	Non Contributing	No Style	Non Contributing	Domestic - Single-family
155	103 NE 46TH ST	1909	Contributing	Craftsman	Contributing	Domestic - Single-family
156	106 NE 46TH ST	1917	Contributing	Classical Revival	Non Contributing	Domestic - Single-family
157	1412 N 47TH ST	1916	Contributing	Classical Revival	None	Domestic - Single-family
158	1413 N 47TH ST	1916	Contributing	Craftsman	Contributing	Domestic - Single-family
159	1416 N 47TH ST	1916	Contributing	Classical Revival	Non Contributing	Domestic - Single-family
160	1417 N 47TH ST	1906	Contributing	Craftsman	Non Contributing	Domestic - Single-family
161	1422 N 47TH ST	1919	Contributing	Colonial Revival	None	Domestic - Single to Multi
162	1423 N 47TH ST	1906	Non Contributing	No Style	None	Domestic - Single-family
163	1426 N 47TH ST	1905	Contributing	Dutch Colonial Revival	Contributing	Domestic - Single-family
164	1427 N 47TH ST	1916	Contributing	Craftsman	None	Domestic - Single-family
165	1602 N 47TH ST	1916	Non Contributing	Craftsman	None	Domestic - Single-family
166	1606 N 47TH ST	1912	Non Contributing	Craftsman	Non Contributing	Domestic - Single-family
167	1610 N 47TH ST	1912	Contributing	Craftsman	None	Domestic - Single-family
168	1611 N 47TH ST	1951	Non Contributing	Minimal Traditional	None	Domestic - Single-family

**WALLINGFORD-MERIDIAN STREETCAR HISTORIC DISTRICT**  
Name of Property

**KING CO., WA**  
County and State

Number Count	Full Address	Year Built	Status	Style	Secondary Building	Classification
169	1614 N 47TH ST	1916	Non Contributing	Craftsman	None	Domestic - Single-family
170	1615 N 47TH ST	1924	Contributing	Colonial Revival	Contributing	Domestic - Single-family
171	1618 N 47TH ST	1916	Contributing	Craftsman	None	Domestic - Single-family
172	1619 N 47TH ST	1924	Contributing	Colonial Revival	Contributing	Domestic - Single-family
173	1621 N 47TH ST	1966	Non Contributing	Modern	None	Domestic - Multi Family
174	1622 N 47TH ST	1916	Contributing	Classical Revival	None	Domestic - Single-family
175	1626 N 47TH ST	1918	Contributing	Classical Revival	None	Domestic - Single-family
176	1702 N 47TH ST	1927	Contributing	Tudor Revival	None	Domestic - Single-family
177	1703 N 47TH ST	1916	Contributing	Craftsman	None	Domestic - Single-family
178	1707 N 47TH ST	1914	Non Contributing	Craftsman	None	Domestic - Single-family
179	1709 N 47TH ST	1913	Contributing	Craftsman	Contributing	Domestic - Single-family
180	1715 N 47TH ST	1914	Contributing	Craftsman	Contributing	Domestic - Single-family
181	1719 N 47TH ST	1914	Contributing	Craftsman	None	Domestic - Single-family
182	1807 N 47TH ST	1916	Contributing	Craftsman	Contributing	Domestic - Single-family
183	1810 N 47TH ST	1920	Contributing	Craftsman	None	Domestic - Single-family
184	1811 N 47TH ST	1914	Contributing	Craftsman	Contributing	Domestic - Single-family
185	1814 N 47TH ST	1924	Contributing	Craftsman	Non Contributing	Domestic - Single-family
186	1815 N 47TH ST	1918	Non Contributing	Craftsman	Non Contributing	Domestic - Single-family
187	1817 N 47TH ST	1914	Contributing	Craftsman	Non Contributing	Domestic - Single-family
188	1818 N 47TH ST	1923	Contributing	Colonial Revival	Non Contributing	Domestic - Single-family
189	1821 N 47TH ST	1950	Non Contributing	Minimal Traditional	None	Domestic - Single-family

**WALLINGFORD-MERIDIAN STREETCAR HISTORIC DISTRICT**  
Name of Property

**KING CO., WA**  
County and State

Number Count	Full Address	Year Built	Status	Style	Secondary Building	Classification
190	1822 N 47TH ST	1923	Contributing	Dutch Colonial Revival	None	Domestic - Single-family
191	1900 N 47TH ST	1924	Non Contributing	No Style	None	Domestic - Single-family
192	1901 N 47TH ST	1922	Non Contributing	Craftsman	Non Contributing	Domestic - Single-family
193	1905 N 47TH ST	1922	Contributing	Craftsman	Contributing	Domestic - Single-family
194	1906 N 47TH ST	1920	Contributing	No Style	None	Domestic - Single-family
195	1908 N 47TH ST	1918	Contributing	Craftsman	None	Domestic - Single-family
196	1909 N 47TH ST	1922	Contributing	Craftsman	Non Contributing	Domestic - Single-family
197	1912 N 47TH ST	1901	Non Contributing	No Style	Non Contributing	Domestic - Single-family
198	1914 N 47TH ST	2000	Non Contributing	No Style	Non Contributing	Domestic - Single-family
199	1915 N 47TH ST	1922	Non Contributing	Craftsman	Non Contributing	Domestic - Single-family
200	1919 N 47TH ST	1922	Contributing	Craftsman	Contributing	Domestic - Single-family
201	1920 N 47TH ST	1908	Contributing	Craftsman	None	Domestic - Single-family
202	202 NE 47TH ST	1915	Contributing	Craftsman	Contributing	Domestic - Single to Multi
203	203 NE 47TH ST	1927	Contributing	Tudor Revival	Contributing	Domestic - Single-family
204	208 NE 47TH ST	1923	Contributing	Dutch Colonial Revival	None	Domestic - Single-family
205	209 NE 47TH ST	1911	Contributing	Craftsman	Contributing	Domestic - Single-family
206	215 NE 47TH ST	1919	Non Contributing	Dutch Colonial Revival	None	Domestic - Single-family
207	317 NE 47TH ST	1921	Contributing	Craftsman	None	Domestic - Single-family
208	1406 N 48TH ST	1928	Contributing	Tudor Revival	Contributing	Domestic - Single to Multi
209	1411 N 48TH ST	1908	Non Contributing	No Style	None	Domestic - Single-family
210	1412 N 48TH ST	1924	Contributing	Craftsman	None	Domestic - Single-family

**WALLINGFORD-MERIDIAN STREETCAR HISTORIC DISTRICT**  
Name of Property

**KING CO., WA**  
County and State

Number Count	Full Address	Year Built	Status	Style	Secondary Building	Classification
211	1417 N 48TH ST	1908	Contributing	Classical Revival	Contributing	Domestic - Single-family
212	1418 N 48TH ST	1906	Contributing	Classical Revival	Non Contributing	Domestic - Single-family
213	1420 N 48TH ST	1906	Non Contributing	Queen Anne - Free Classic	Non Contributing	Domestic - Single-family
214	1421 N 48TH ST	1908	Contributing	Craftsman	Non Contributing	Domestic - Single-family
215	1425 N 48TH ST	1908	Non Contributing	No Style	Non Contributing	Domestic - Single-family
216	1426 N 48TH ST	1928	Contributing	Tudor Revival	Non Contributing	Domestic - Single-family
217	1429 N 48TH ST	1908	Contributing	Craftsman	Contributing	Domestic - Single to Multi
218	1603 N 48TH ST	1901	Contributing	Classical Revival	Contributing	Domestic - Single-family
219	1607 N 48TH ST	1906	Contributing	Queen Anne - Free Classic	Contributing	Domestic - Single-family
220	1608 N 48TH ST	1910	Contributing	Craftsman	None	Domestic - Single-family
221	1611 N 48TH ST	2014	Non Contributing	No Style	None	Domestic - Single-family
222	1614 N 48TH ST	1911	Contributing	Craftsman	None	Domestic - Single-family
223	1616 N 48TH ST	1914	Non Contributing	No Style	None	Domestic - Single to Multi
224	1617 N 48TH ST	2020	Non Contributing	No Style	None	Domestic - Multi Family
225	1618 N 48TH ST	1916	Non Contributing	Classical Revival	None	Domestic - Single-family
226	1622 N 48TH ST	1916	Non Contributing	Craftsman	None	Domestic - Single-family
227	1628 N 48TH ST	1949	Non Contributing	Minimal Traditional	Non Contributing	Domestic - Single-family
228	1701 N 48TH ST	1930	Contributing	Tudor Revival	Contributing	Domestic - Multi Family
229	1715 N 48TH ST	1929	Contributing	Tudor Revival	Contributing	Domestic - Multi Family
230	1800 N 48TH ST	1920	Non Contributing	Colonial Revival	Non Contributing	Domestic - Single-family
231	1806 N 48TH ST	1923	Contributing	Craftsman	Contributing	Domestic - Single-family

**WALLINGFORD-MERIDIAN STREETCAR HISTORIC DISTRICT**  
Name of Property

**KING CO., WA**  
County and State

Number Count	Full Address	Year Built	Status	Style	Secondary Building	Classification
232	1811 N 48TH ST	1923	Contributing	Craftsman	Non Contributing	Domestic - Single-family
233	1812 N 48TH ST	1914	Contributing	Craftsman	Contributing	Domestic - Single-family
234	1815 N 48TH ST	1923	Contributing	Craftsman	Non Contributing	Domestic - Single-family
235	1816 N 48TH ST	1914	Contributing	Craftsman	Contributing	Domestic - Single-family
236	1819 N 48TH ST	1923	Contributing	Craftsman	Non Contributing	Domestic - Single-family
237	1820 N 48TH ST	1914	Contributing	Craftsman	None	Domestic - Single-family
238	1823 N 48TH ST	1923	Contributing	Craftsman	Non Contributing	Domestic - Single-family
239	1824 N 48TH ST	1915	Contributing	Craftsman	Contributing	Domestic - Single-family
240	1908 N 48TH ST	1923	Contributing	Craftsman	Contributing	Domestic - Single-family
241	1909 N 48TH ST	1918	Contributing	Craftsman	None	Domestic - Single-family
242	1913 N 48TH ST	1913	Contributing	Craftsman	Contributing	Domestic - Single-family
243	1914 N 48TH ST	1918	Non Contributing	Colonial Revival	None	Domestic - Single-family
244	1916 N 48TH ST	1911	Contributing	Craftsman	Contributing	Domestic - Single-family
245	1917 N 48TH ST	1932	Contributing	Tudor Revival	None	Domestic - Single-family
246	1920 N 48TH ST	1944	Non Contributing	Minimal Traditional	None	Domestic - Single-family
247	1921 N 48TH ST	1932	Contributing	Tudor Revival	None	Domestic - Single-family
248	1924 N 48TH ST	1948	Non Contributing	Modern	None	Domestic - Single-family
249	1412 N 49TH ST	1921	Contributing	Tudor Revival	Contributing	Domestic - Single-family
250	1413 N 49TH ST	1913	Contributing	Craftsman	Non Contributing	Domestic - Single to Multi
251	1416 N 49TH ST	1921	Contributing	Craftsman	Contributing	Domestic - Single-family
252	1417 N 49TH ST	1905	Non Contributing	No Style	Non Contributing	Domestic - Single-family

**WALLINGFORD-MERIDIAN STREETCAR HISTORIC DISTRICT**  
Name of Property

**KING CO., WA**  
County and State

Number Count	Full Address	Year Built	Status	Style	Secondary Building	Classification
253	1422 N 49TH ST	1923	Contributing	Tudor Revival	None	Domestic - Single-family
254	1423 N 49TH ST	1922	Non Contributing	Colonial Revival	Non Contributing	Domestic - Single-family
255	1427 N 49TH ST	1912	Contributing	Classical Revival	Non Contributing	Domestic - Single-family
256	1600 N 49TH ST	1910	Contributing	Craftsman	None	Domestic - Single-family
257	1606 N 49TH ST	1916	Contributing	Craftsman	None	Domestic - Single-family
258	1608 N 49TH ST	2003	Non Contributing	No Style	None	Domestic - Single-family
259	1609 N 49TH ST	1910	Contributing	Craftsman	Contributing	Domestic - Single-family
260	1611 N 49TH ST	1966	Non Contributing	Modern	None	Domestic - Single-family
261	1612 N 49TH ST	1906	Contributing	Craftsman	Non Contributing	Domestic - Single-family
262	1615 N 49TH ST	1920	Contributing	Colonial Revival	None	Domestic - Single-family
263	1616 N 49TH ST	1916	Contributing	Craftsman	None	Domestic - Single-family
264	1619 N 49TH ST	1906	Contributing	Classical Revival	Non Contributing	Domestic - Single-family
265	1621 N 49TH ST	1916	Contributing	Craftsman	Contributing	Domestic - Single-family
266	1622 N 49TH ST	2017	Non Contributing	No Style	None	Domestic - Single-family
267	1625 N 49TH ST	1912	Contributing	Craftsman	Contributing	Domestic - Single-family
268	1627 N 49TH ST	1924	Contributing	Colonial Revival	Contributing	Domestic - Single-family
269	1700 N 49TH ST	1954	Non Contributing	Modern	None	Religious Facility
270	1707 N 49TH ST	1924	Contributing	Collegiate Gothic	Non Contributing	Religious Facility
271	1804 N 49TH ST	1924	Contributing	Craftsman	None	Domestic - Single-family
272	1805 N 49TH ST	1955	Non Contributing	Modern	None	Religious Facility
273	1808 N 49TH ST	1920	Contributing	Craftsman	Contributing	Domestic - Single-family
274	1811 N 49TH ST	1916	Contributing	Classical Revival	Contributing	Domestic - Single-family

**WALLINGFORD-MERIDIAN STREETCAR HISTORIC DISTRICT**  
Name of Property

**KING CO., WA**  
County and State

Number Count	Full Address	Year Built	Status	Style	Secondary Building	Classification
275	1812 N 49TH ST	1922	Contributing	Craftsman	Contributing	Domestic - Single-family
276	1816 N 49TH ST	1924	Contributing	Craftsman	None	Domestic - Single-family
277	1817 N 49TH ST	1914	Contributing	Craftsman	None	Domestic - Single-family
278	1902 N 49TH ST	1910	Non Contributing	Classical Revival	None	Domestic - Single-family
279	1906 N 49TH ST	1916	Contributing	Classical Revival	None	Domestic - Single-family
280	1910 N 49TH ST	1910	Non Contributing	Craftsman	Non Contributing	Domestic - Single-family
281	1911 N 49TH ST	1910	Contributing	Classical Revival	Contributing	Domestic - Single-family
282	1912 N 49TH ST	1910	Contributing	Craftsman	Contributing	Domestic - Single-family
283	1915 N 49TH ST	1911	Non Contributing	No Style	Non Contributing	Domestic - Single-family
284	1916 N 49TH ST	1919	Contributing	Classical Revival	Non Contributing	Domestic - Single-family
285	1919 N 49TH ST	1916	Non Contributing	Classical Revival	None	Domestic - Single-family
286	1920 N 49TH ST	1906	Non Contributing	No Style	None	Domestic - Single-family
287	1925 N 49TH ST	1916	Non Contributing	Classical Revival	None	Domestic - Single-family
288	4528 4TH AVE NE	1916	Contributing	Craftsman	Contributing	Domestic - Single-family
289	4529 4TH AVE NE	1912	Contributing	Arts & Crafts	None	Domestic - Single-family
290	4532 4TH AVE NE	1916	Contributing	Craftsman	None	Domestic - Single-family
291	4535 4TH AVE NE	1907	Contributing	Craftsman	None	Domestic - Single-family
292	4536 4TH AVE NE	2005	Non Contributing	No Style	Non Contributing	Domestic - Single-family
293	4537 4TH AVE NE	1921	Contributing	Dutch Colonial Revival	Contributing	Domestic - Single-family
294	4541 4TH AVE NE	1921	Contributing	Dutch Colonial Revival	Contributing	Domestic - Single-family
295	4542 4TH AVE NE	1921	Contributing	Craftsman	None	Domestic - Single-family

**WALLINGFORD-MERIDIAN STREETCAR HISTORIC DISTRICT**  
Name of Property

**KING CO., WA**  
County and State

Number Count	Full Address	Year Built	Status	Style	Secondary Building	Classification
296	4546 4TH AVE NE	1923	Contributing	No Style	Non Contributing	Domestic - Multi Family
297	4547 4TH AVE NE	1915	Contributing	Colonial Revival	None	Domestic - Single-family
298	4548 4TH AVE NE	1922	Contributing	Craftsman	Contributing	Domestic - Single-family
299	4551 4TH AVE NE	1919	Contributing	Classical Revival	Contributing	Domestic - Single-family
300	4553 4TH AVE NE	1922	Contributing	Classical Revival	None	Domestic - Single-family
301	4554 4TH AVE NE	1922	Contributing	Colonial Revival	Contributing	Domestic - Single-family
302	4558 4TH AVE NE	1922	Contributing	Craftsman	None	Domestic - Single-family
303	4700 4TH AVE NE	1910	Contributing	Craftsman	Contributing	Domestic - Single-family
304	4703 4TH AVE NE	1913	Contributing	Craftsman	Contributing	Domestic - Single-family
305	4706 4TH AVE NE	1911	Contributing	Craftsman	None	Domestic - Single-family
306	4707 4TH AVE NE	1924	Contributing	Craftsman	Contributing	Domestic - Single-family
307	4710 4TH AVE NE	1925	Contributing	Colonial Revival	Contributing	Domestic - Single-family
308	4711 4TH AVE NE	1919	Contributing	Mission Revival	None	Domestic - Single-family
309	4714 4TH AVE NE	1923	Contributing	Colonial Revival	None	Domestic - Single-family
310	4715 4TH AVE NE	1928	Contributing	Tudor Revival	Contributing	Domestic - Single-family
311	4717 4TH AVE NE	1926	Contributing	Colonial Revival	Contributing	Domestic - Single-family
312	4718 4TH AVE NE	1914	Contributing	Craftsman	None	Domestic - Single-family
313	4720 4TH AVE NE	1911	Contributing	Craftsman	None	Domestic - Single-family
314	4721 4TH AVE NE	1927	Contributing	Craftsman	Contributing	Domestic - Single-family
315	4724 4TH AVE NE	1911	Non Contributing	Craftsman	None	Domestic - Single-family
316	4725 4TH AVE NE	1930	Contributing	Colonial Revival	None	Domestic - Single-family



**WALLINGFORD-MERIDIAN STREETCAR HISTORIC DISTRICT**  
Name of Property

**KING CO., WA**  
County and State

Number Count	Full Address	Year Built	Status	Style	Secondary Building	Classification
317	4728 4TH AVE NE	1914	Non Contributing	No Style	None	Domestic - Single-family
318	4731 4TH AVE NE	1908	Contributing	Classical Revival	None	Domestic - Single-family
319	4732 4TH AVE NE	1928	Contributing	Tudor Revival	None	Domestic - Single-family
320	4735 4TH AVE NE	1914	Contributing	Craftsman	None	Domestic - Single-family
321	4737 4TH AVE NE	1912	Contributing	Swiss Chalet	None	Domestic - Single-family
322	4738 4TH AVE NE	1912	Contributing	Craftsman	None	Domestic - Single-family
323	4740 4TH AVE NE	1911	Contributing	Craftsman	Contributing	Domestic - Single-family
324	4743 4TH AVE NE	1918	Contributing	Classical Revival	None	Domestic - Single-family
325	4744 4TH AVE NE	1910	Contributing	Craftsman	Contributing	Domestic - Single-family
326	4747 4TH AVE NE	1911	Contributing	Craftsman	Contributing	Domestic - Single-family
327	4748 4TH AVE NE	1910	Contributing	Craftsman	Contributing	Domestic - Single-family
328	4749 4TH AVE NE	1911	Contributing	Swiss Chalet	Contributing	Domestic - Single-family
329	4754 4TH AVE NE	1911	Contributing	Craftsman	Contributing	Domestic - Single-family
330	4756 4TH AVE NE	1913	Contributing	Craftsman	Contributing	Domestic - Single-family
331	4757 4TH AVE NE	1994	Non Contributing	No Style	Non Contributing	Domestic - Single-family
332	1609 N 50TH ST	1910	Contributing	Classical Revival	Contributing	Domestic - Single-family
333	1615 N 50TH ST	1979	Non Contributing	No Style	None	Domestic - Single-family
334	1619 N 50TH ST	2021	Non Contributing	No Style	None	Domestic - Multi Family
335	1623 N 50TH ST	1909	Non Contributing	Craftsman	None	Domestic - Single-family
336	1627 N 50TH ST	1906	Contributing	No Style	None	Domestic - Single-family
337	1703 N 50TH ST	1922	Contributing	Craftsman	None	Domestic - Single-family

**WALLINGFORD-MERIDIAN STREETCAR HISTORIC DISTRICT**  
Name of Property

**KING CO., WA**  
County and State

Number Count	Full Address	Year Built	Status	Style	Secondary Building	Classification
338	1707 N 50TH ST	1915	Contributing	Craftsman	Non Contributing	Domestic - Single-family
339	1711 N 50TH ST	1914	Contributing	Craftsman	Non Contributing	Domestic - Single-family
340	1715 N 50TH ST	1912	Contributing	Craftsman	Contributing	Domestic - Single-family
341	1809 N 50TH ST	1926	Contributing	Craftsman	Non Contributing	Domestic - Single-family
342	1815 N 50TH ST	1912	Non Contributing	No Style	Non Contributing	Domestic - Single-family
343	1817 N 50TH ST	1924	Contributing	Colonial Revival	None	Domestic - Single-family
344	1821 N 50TH ST	1925	Contributing	Colonial Revival	None	Domestic - Single to Multi
345	1909 N 50TH ST	1916	Non Contributing	Classical Revival	Non Contributing	Domestic - Single-family
346	1913 N 50TH ST	1920	Contributing	Colonial Revival	None	Domestic - Single-family
347	1919 N 50TH ST	1910	Non Contributing	Classical Revival	Non Contributing	Domestic - Single to Multi
348	2309 N 50TH ST	1922	Non Contributing	Craftsman	None	Domestic - Single-family
349	2315 N 50TH ST	1923	Contributing	Dutch Colonial Revival	None	Domestic - Single-family
350	2319 N 50TH ST	1908	Contributing	Craftsman	Contributing	Domestic - Single-family
351	2511 N 50TH ST	1909	Non Contributing	Classical Revival	None	Domestic - Multi Family
352	101 NE 50TH ST	1987	Non Contributing	Neighborhood Store	None	Commercial
353	111 NE 50TH ST	1911	Contributing	Craftsman	Contributing	Domestic - Single-family
354	253 NE 50TH ST	1922	Contributing	Dutch Colonial Revival	None	Domestic - Single-family
355	265 NE 50TH ST	1925	Contributing	Colonial Revival	None	Domestic - Single-family
356	305 NE 50TH ST	1922	Contributing	Dutch Colonial Revival	None	Domestic - Single-family
357	311 NE 50TH ST	1912	Contributing	Craftsman	Contributing	Domestic - Single-family
358	4523 5TH AVE NE	1915	Contributing	Colonial Revival	None	Domestic - Single-family
359	4525 5TH AVE NE	1921	Contributing	Craftsman	Non Contributing	Domestic - Single-family

**WALLINGFORD-MERIDIAN STREETCAR HISTORIC DISTRICT**  
Name of Property

**KING CO., WA**  
County and State

Number Count	Full Address	Year Built	Status	Style	Secondary Building	Classification
360	4531 5TH AVE NE	1923	Contributing	Dutch Colonial Revival	Contributing	Domestic - Single-family
361	4535 5TH AVE NE	1923	Contributing	Colonial Revival	Non Contributing	Domestic - Single-family
362	4539 5TH AVE NE	1908	Contributing	Classical Revival	Contributing	Domestic - Single-family
363	4541 5TH AVE NE	1919	Contributing	Craftsman	Contributing	Domestic - Single-family
364	4545 5TH AVE NE	1919	Contributing	Craftsman	None	Domestic - Single-family
365	4551 5TH AVE NE	1912	Contributing	Classical Revival	None	Domestic - Single to Multi
366	4555 5TH AVE NE	1919	Non Contributing	Craftsman	None	Domestic - Single to Multi
367	4559 5TH AVE NE	1919	Contributing	Craftsman	None	Domestic - Single-family
368	4506 BAGLEY AVE N	1910	Contributing	Craftsman	None	Domestic - Single-family
369	4508 BAGLEY AVE N	1910	Contributing	Classical Revival	None	Domestic - Single-family
370	4512 BAGLEY AVE N	2020	Non Contributing	No Style	None	Domestic - Multi Family
371	4514 BAGLEY AVE N	2020	Non Contributing	No Style	None	Domestic - Multi Family
372	4516 BAGLEY AVE N	1921	Contributing	Colonial Revival	Non Contributing	Domestic - Single-family
373	4520 BAGLEY AVE N	1911	Contributing	Craftsman	Non Contributing	Domestic - Single-family
374	4521 BAGLEY AVE N	1916	Contributing	Classical Revival	Non Contributing	Domestic - Single-family
375	4524 BAGLEY AVE N	1911	Contributing	Craftsman	None	Domestic - Single-family
376	4525 BAGLEY AVE N	1914	Contributing	Classical Revival	Non Contributing	Domestic - Single-family
377	4528 BAGLEY AVE N	1909	Contributing	Classical Revival	Contributing	Domestic - Single-family
378	4529 BAGLEY AVE N	1911	Contributing	Craftsman	Non Contributing	Domestic - Single to Multi
379	4533 BAGLEY AVE N	1906	Contributing	Craftsman	None	Domestic - Single to Multi
380	4534 BAGLEY AVE N	1914	Contributing	Craftsman	None	Domestic - Single-family

**WALLINGFORD-MERIDIAN STREETCAR HISTORIC DISTRICT**  
Name of Property

**KING CO., WA**  
County and State

Number Count	Full Address	Year Built	Status	Style	Secondary Building	Classification
381	4600 BAGLEY AVE N	1990	Non Contributing	No Style	None	Domestic - Single-family
382	4608 BAGLEY AVE N	1911	Contributing	Craftsman	None	Domestic - Single-family
383	4610 BAGLEY AVE N	1911	Contributing	Craftsman	None	Domestic - Single-family
384	4611 BAGLEY AVE N	1908	Contributing	Classical Revival	None	Domestic - Single-family
385	4614 BAGLEY AVE N	1906	Non Contributing	No Style	Non Contributing	Domestic - Single-family
386	4615 BAGLEY AVE N	1909	Contributing	Craftsman	None	Domestic - Single-family
387	4515 BURKE AVE N	1928	Contributing	Tudor Revival	None	Domestic - Multi Family
388	4611 BURKE AVE N	1927	Contributing	Colonial Revival	None	Domestic - Single-family
389	4707 BURKE AVE N	1924	Contributing	Colonial Revival	Non Contributing	Domestic - Single-family
390	4708 BURKE AVE N	1910	Contributing	Classical Revival	None	Domestic - Single-family
391	4710 BURKE AVE N	1910	Non Contributing	Craftsman	None	Domestic - Single-family
392	4714 BURKE AVE N	1915	Non Contributing	No Style	None	Domestic - Single-family
393	4718 BURKE AVE N	1911	Contributing	No Style	None	Domestic - Single-family
394	4802 BURKE AVE N	1924	Non Contributing	Colonial Revival	Non Contributing	Domestic - Single-family
395	4808 BURKE AVE N	1924	Non Contributing	Colonial Revival	Non Contributing	Domestic - Single-family
396	4812 BURKE AVE N	1924	Non Contributing	No Style	Non Contributing	Domestic - Single-family
397	4819 BURKE AVE N	1906	Contributing	Craftsman	Contributing	Domestic - Single-family
398	4820 BURKE AVE N	1925	Contributing	Colonial Revival	Contributing	Domestic - Single-family
399	4903 BURKE AVE N	1925	Contributing	Craftsman	None	Domestic - Single-family
400	4907 BURKE AVE N	1925	Contributing	Craftsman	Non Contributing	Domestic - Single-family
401	4910 BURKE AVE N	1916	Contributing	Craftsman	None	Domestic - Single-family

**WALLINGFORD-MERIDIAN STREETCAR HISTORIC DISTRICT**  
Name of Property

**KING CO., WA**  
County and State

Number Count	Full Address	Year Built	Status	Style	Secondary Building	Classification
402	4911 BURKE AVE N	1922	Contributing	Colonial Revival	None	Domestic - Single-family
403	4914 BURKE AVE N	1913	Non Contributing	Craftsman	None	Domestic - Single-family
404	4918 BURKE AVE N	1916	Contributing	Craftsman	None	Domestic - Single-family
405	4511 CORLISS AVE N	1915	Contributing	Craftsman	None	Domestic - Single-family
406	4515 CORLISS AVE N	1915	Non Contributing	Craftsman	Non Contributing	Domestic - Single-family
407	4517 CORLISS AVE N	1915	Non Contributing	Craftsman	Non Contributing	Domestic - Single-family
408	4518 CORLISS AVE N	1911	Contributing	Craftsman	Non Contributing	Domestic - Single-family
409	4521 CORLISS AVE N	1906	Contributing	Craftsman	Non Contributing	Domestic - Single-family
410	4523 CORLISS AVE N	1914	Contributing	Craftsman	None	Domestic - Single-family
411	4524 CORLISS AVE N	1905	Contributing	Classical Revival	Contributing	Domestic - Single-family
412	4527 CORLISS AVE N	1906	Contributing	Craftsman	Contributing	Domestic - Single-family
413	4528 CORLISS AVE N	1974	Non Contributing	No Style	None	Domestic - Multi Family
414	4532 CORLISS AVE N	1909	Contributing	Classical Revival	Contributing	Domestic - Single-family
415	4608 CORLISS AVE N	1906	Contributing	Classical Revival	None	Domestic - Single-family
416	4609 CORLISS AVE N	1925	Contributing	Craftsman	None	Domestic - Single-family
417	4612 CORLISS AVE N	1911	Contributing	Craftsman	None	Domestic - Single-family
418	4615 CORLISS AVE N	1910	Contributing	Craftsman	Contributing	Domestic - Single-family
419	4618 CORLISS AVE N	1906	Non Contributing	Craftsman	None	Domestic - Single-family
420	4511 DENSMORE AVE N	1914	Contributing	Craftsman	Contributing	Domestic - Single to Multi
421	4515 DENSMORE AVE N	1914	Contributing	Craftsman	Contributing	Domestic - Single-family
422	4519 DENSMORE AVE N	1916	Contributing	Craftsman	None	Domestic - Single-family

**WALLINGFORD-MERIDIAN STREETCAR HISTORIC DISTRICT**  
Name of Property

**KING CO., WA**  
County and State

Number Count	Full Address	Year Built	Status	Style	Secondary Building	Classification
423	4609 DENSMORE AVE N	1922	Contributing	Craftsman	None	Domestic - Single-family
424	4707 DENSMORE AVE N	1917	Contributing	No Style	None	Domestic - Single-family
425	4711 DENSMORE AVE N	1910	Contributing	Classical Revival	None	Domestic - Single-family
426	4715 DENSMORE AVE N	1910	Contributing	Craftsman	None	Domestic - Single-family
427	4717 DENSMORE AVE N	1910	Non Contributing	Craftsman	None	Domestic - Single to Multi
428	4901 DENSMORE AVE N	1976	Non Contributing	No Style	None	Domestic - Multi Family
429	4907 DENSMORE AVE N	1960	Non Contributing	No Style	None	Domestic - Single-family
430	4514 EASTERN AVE N	1909	Contributing	Craftsman	None	Domestic - Single-family
431	4515 EASTERN AVE N	1910	Contributing	Classical Revival	None	Domestic - Single-family
432	4520 EASTERN AVE N	1909	Contributing	No Style	None	Domestic - Single-family
433	4521 EASTERN AVE N	1910	Non Contributing	Classical Revival	Non Contributing	Domestic - Single-family
434	4522 EASTERN AVE N	1909	Contributing	Classical Revival	Non Contributing	Domestic - Single-family
435	4525 EASTERN AVE N	1906	Contributing	Classical Revival	None	Domestic - Single-family
436	4526 EASTERN AVE N	1908	Non Contributing	Classical Revival	None	Domestic - Single-family
437	4528 EASTERN AVE N	1910	Contributing	Craftsman	None	Domestic - Single-family
438	4529 EASTERN AVE N	1918	Contributing	Classical Revival	None	Domestic - Single-family
439	4533 EASTERN AVE N	1906	Contributing	Classical Revival	Non Contributing	Domestic - Single to Multi
440	4536 EASTERN AVE N	1923	Contributing	Craftsman	Non Contributing	Domestic - Single to Multi
441	4604 EASTERN AVE N	1906	Contributing	Arts and Crafts	None	Domestic - Single-family
442	4608 EASTERN AVE N	1906	Contributing	Dutch Colonial Revival	None	Domestic - Single-family
443	4611 EASTERN AVE N	1910	Contributing	Craftsman	None	Domestic - Single-family

**WALLINGFORD-MERIDIAN STREETCAR HISTORIC DISTRICT**  
Name of Property

**KING CO., WA**  
County and State

Number Count	Full Address	Year Built	Status	Style	Secondary Building	Classification
444	4612 EASTERN AVE N	1906	Contributing	Craftsman	None	Domestic - Single-family
445	4616 EASTERN AVE N	1906	Contributing	Craftsman	None	Domestic - Single-family
446	4624 EASTERN AVE N	1906	Contributing	Craftsman	None	Domestic - Single-family
447	4625 EASTERN AVE N	1916	Contributing	Tudor Revival	Contributing	Domestic - Single-family
448	4626 EASTERN AVE N	1913	Non Contributing	No Style	Non Contributing	Domestic - Single-family
449	4630 EASTERN AVE N	1909	Contributing	Craftsman	None	Domestic - Single-family
450	4635 EASTERN AVE N	1915	Contributing	Craftsman	None	Domestic - Single-family
451	4636 EASTERN AVE N	1912	Non Contributing	Craftsman	None	Domestic - Single-family
452	4638 EASTERN AVE N	1912	Non Contributing	No Style	None	Domestic - Single-family
453	4639 EASTERN AVE N	1915	Contributing	Craftsman	None	Domestic - Single-family
454	4642 EASTERN AVE N	1912	Contributing	Classical Revival	None	Domestic - Single-family
455	4643 EASTERN AVE N	1910	Contributing	Classical Revival	None	Domestic - Single-family
456	4646 EASTERN AVE N	1910	Contributing	Classical Revival	Contributing	Domestic - Single to Multi
457	4647 EASTERN AVE N	1913	Contributing	Craftsman	None	Domestic - Single-family
458	4648 EASTERN AVE N	1906	Contributing	Craftsman	Contributing	Domestic - Single-family
459	4649 EASTERN AVE N	1916	Contributing	Craftsman	None	Domestic - Single-family
460	4655 EASTERN AVE N	1915	Contributing	Craftsman	Contributing	Domestic - Single-family
461	4656 EASTERN AVE N	1924	Contributing	Craftsman	None	Domestic - Single-family
462	4658 EASTERN AVE N	1924	Non Contributing	Craftsman	None	Domestic - Single-family
463	4659 EASTERN AVE N	2003	Non Contributing	No Style	Non Contributing	Domestic - Single-family
464	4663 EASTERN AVE N	1916	Contributing	Craftsman	Contributing	Domestic - Single-family

**WALLINGFORD-MERIDIAN STREETCAR HISTORIC DISTRICT**  
Name of Property

**KING CO., WA**  
County and State

Number Count	Full Address	Year Built	Status	Style	Secondary Building	Classification
465	4664 EASTERN AVE N	1920	Contributing	Craftsman	Non Contributing	Domestic - Single-family
466	4667 EASTERN AVE N	1914	Contributing	Craftsman	None	Domestic - Single-family
467	4668 EASTERN AVE N	1920	Contributing	No Style	Non Contributing	Domestic - Single-family
468	4669 EASTERN AVE N	1912	Contributing	Classical Revival	Contributing	Domestic - Single-family
469	4672 EASTERN AVE N	1920	Contributing	Craftsman	None	Domestic - Single-family
470	4673 EASTERN AVE N	1921	Non Contributing	No Style	None	Domestic - Single-family
471	4674 EASTERN AVE N	1909	Contributing	Craftsman	None	Domestic - Single-family
472	4676 EASTERN AVE N	1909	Contributing	Craftsman	Contributing	Domestic - Single-family
473	4509 LATONA AVE NE	1920	Non Contributing	Colonial Revival	None	Domestic - Multi Family
474	4514 LATONA AVE NE	1916	Contributing	Colonial Revival	None	Domestic - Single-family
475	4515 LATONA AVE NE	1922	Contributing	Classical Revival	None	Domestic - Single-family
476	4516 LATONA AVE NE	1916	Contributing	Colonial Revival	Contributing	Domestic - Single-family
477	4517 LATONA AVE NE	1925	Contributing	Craftsman	None	Domestic - Single-family
478	4520 LATONA AVE NE	1916	Contributing	Colonial Revival	Contributing	Domestic - Single-family
479	4521 LATONA AVE NE	1922	Contributing	Colonial Revival	Contributing	Domestic - Single-family
480	4524 LATONA AVE NE	1912	Contributing	Dutch Colonial Revival	Contributing	Domestic - Single-family
481	4525 LATONA AVE NE	1922	Contributing	Colonial Revival	None	Domestic - Single-family
482	4530 LATONA AVE NE	1915	Non Contributing	No Style	Non Contributing	Domestic - Single-family
483	4531 LATONA AVE NE	1909	Contributing	Classical Revival	Contributing	Domestic - Single-family
484	4532 LATONA AVE NE	1916	Contributing	Craftsman	Non Contributing	Domestic - Single-family
485	4533 LATONA AVE NE	1921	Contributing	Colonial Revival	None	Domestic - Single-family



**WALLINGFORD-MERIDIAN STREETCAR HISTORIC DISTRICT**  
Name of Property

**KING CO., WA**  
County and State

Number Count	Full Address	Year Built	Status	Style	Secondary Building	Classification
486	4536 LATONA AVE NE	1914	Contributing	Craftsman	Contributing	Domestic - Single to Multi
487	4537 LATONA AVE NE	1921	Contributing	Colonial Revival	None	Domestic - Single-family
488	4540 LATONA AVE NE	1912	Contributing	Classical Revival	Contributing	Domestic - Single-family
489	4541 LATONA AVE NE	1921	Contributing	Colonial Revival	None	Domestic - Single-family
490	4544 LATONA AVE NE	1923	Contributing	Dutch Colonial Revival	Contributing	Domestic - Single-family
491	4545 LATONA AVE NE	1922	Contributing	Dutch Colonial Revival	Contributing	Domestic - Single-family
492	4549 LATONA AVE NE	1920	Contributing	Colonial Revival	None	Domestic - Single-family
493	4550 LATONA AVE NE	1912	Contributing	Craftsman	None	Domestic - Single-family
494	4553 LATONA AVE NE	1921	Contributing	Craftsman	None	Domestic - Single-family
495	4554 LATONA AVE NE	1917	Contributing	Prairie	None	Domestic - Single to Multi
496	4557 LATONA AVE NE	1921	Contributing	Craftsman	None	Domestic - Single-family
497	4558 LATONA AVE NE	1921	Contributing	Colonial Revival	None	Domestic - Single-family
498	4700 LATONA AVE NE	1919	Contributing	Craftsman	Contributing	Domestic - Single-family
499	4701 LATONA AVE NE	1909	Contributing	Classical Revival	Contributing	Domestic - Single-family
500	4706 LATONA AVE NE	1911	Contributing	Colonial Revival	Contributing	Domestic - Single-family
501	4707 LATONA AVE NE	1912	Contributing	Classical Revival	Contributing	Domestic - Single-family
502	4710 LATONA AVE NE	1911	Contributing	Craftsman	None	Domestic - Single-family
503	4711 LATONA AVE NE	1909	Contributing	Craftsman	None	Domestic - Single-family
504	4714 LATONA AVE NE	1917	Contributing	Craftsman	None	Domestic - Single-family
505	4715 LATONA AVE NE	1910	Contributing	Craftsman	None	Domestic - Single-family
506	4718 LATONA AVE NE	1911	Contributing	Classical Revival	None	Domestic - Single-family

**WALLINGFORD-MERIDIAN STREETCAR HISTORIC DISTRICT**  
Name of Property

**KING CO., WA**  
County and State

Number Count	Full Address	Year Built	Status	Style	Secondary Building	Classification
507	4719 LATONA AVE NE	2000	Non Contributing	No Style	None	Domestic - Single-family
508	4721 LATONA AVE NE	1910	Non Contributing	Craftsman	None	Domestic - Single-family
509	4722 LATONA AVE NE	1910	Contributing	Classical Revival	Contributing	Domestic - Single-family
510	4725 LATONA AVE NE	1924	Non Contributing	No Style	None	Domestic - Single-family
511	4730 LATONA AVE NE	1908	Contributing	Craftsman	None	Domestic - Single-family
512	4731 LATONA AVE NE	1924	Non Contributing	Colonial Revival	Non Contributing	Domestic - Single-family
513	4734 LATONA AVE NE	1909	Contributing	Craftsman	None	Domestic - Single-family
514	4735 LATONA AVE NE	2001	Non Contributing	No Style	None	Domestic - Single-family
515	4736 LATONA AVE NE	1913	Contributing	Craftsman	None	Domestic - Single-family
516	4739 LATONA AVE NE	1909	Contributing	No Style	None	Domestic - Single-family
517	4740 LATONA AVE NE	1911	Contributing	No Style	None	Domestic - Single-family
518	4741 LATONA AVE NE	1908	Contributing	Craftsman	None	Domestic - Single-family
519	4744 LATONA AVE NE	1911	Non Contributing	No Style	None	Domestic - Single-family
520	4747 LATONA AVE NE	1912	Contributing	Craftsman	None	Domestic - Single-family
521	4748 LATONA AVE NE	1946	Non Contributing	Minimal Traditional	None	Domestic - Single-family
522	4749 LATONA AVE NE	1924	Non Contributing	No Style	Non Contributing	Domestic - Single-family
523	4753 LATONA AVE NE	1926	Contributing	Tudor Revival	Contributing	Domestic - Single-family
524	4754 LATONA AVE NE	1921	Contributing	Prairie	None	Domestic - Single-family
525	4604 MERIDIAN AVE N	1906	Contributing	Classical Revival	None	Domestic - Single-family
526	4607 MERIDIAN AVE N	1919	Contributing	Craftsman	Contributing	Domestic - Single-family
527	4608 MERIDIAN AVE N	1911	Contributing	Dutch Colonial Revival	Non Contributing	Domestic - Single to Multi

**WALLINGFORD-MERIDIAN STREETCAR HISTORIC DISTRICT**  
Name of Property

**KING CO., WA**  
County and State

Number Count	Full Address	Year Built	Status	Style	Secondary Building	Classification
528	4611 MERIDIAN AVE N	1919	Non Contributing	Dutch Colonial Revival	Non Contributing	Domestic - Single to Multi
529	4612 MERIDIAN AVE N	1909	Non Contributing	Craftsman	Non Contributing	Domestic - Single-family
530	4616 MERIDIAN AVE N	1911	Contributing	Craftsman	None	Domestic - Single-family
531	4617 MERIDIAN AVE N	1919	Contributing	Colonial Revival	Contributing	Domestic - Single-family
532	4703 MERIDIAN AVE N	1947	Non Contributing	Minimal Traditional	None	Domestic - Single-family
533	4709 MERIDIAN AVE N	1910	Contributing	Classical Revival	None	Domestic - Single-family
534	4711 MERIDIAN AVE N	1920	Contributing	Craftsman	None	Domestic - Single-family
535	4717 MERIDIAN AVE N	1920	Contributing	Colonial Revival	None	Domestic - Single-family
536	4809 MERIDIAN AVE N	1920	Contributing	Colonial Revival	None	Domestic - Single-family
537	4811 MERIDIAN AVE N	1906	Non Contributing	Classical Revival	None	Domestic - Single-family
538	4817 MERIDIAN AVE N	1906	Non Contributing	Craftsman	None	Domestic - Single-family
539	4907 MERIDIAN AVE N	1906	Non Contributing	No Style	None	Domestic - Single-family
540	4523 SUNNYSIDE AVE N	1914	Non Contributing	Classical Revival	Contributing	Domestic - Single-family
541	4524 SUNNYSIDE AVE N	1914	Contributing	Craftsman	Non Contributing	Domestic - Single-family
542	4527 SUNNYSIDE AVE N	1907	Non Contributing	No Style	Non Contributing	Domestic - Single-family
543	4528 SUNNYSIDE AVE N	1914	Contributing	Craftsman	Contributing	Domestic - Single-family
544	4532 SUNNYSIDE AVE N	1909	Contributing	Queen Anne - Free Classic	Non Contributing	Domestic - Single-family
545	4533 SUNNYSIDE AVE N	1908	Contributing	Craftsman	Non Contributing	Domestic - Single-family
546	4600 SUNNYSIDE AVE N	1913	Contributing	No Style	None	Religious Facility
547	4603 SUNNYSIDE AVE N	1919	Contributing	Colonial Revival	None	Domestic - Single-family
548	4607 SUNNYSIDE AVE N	1915	Contributing	Colonial Revival	None	Domestic - Single-family
549	4608 SUNNYSIDE AVE N	1911	Contributing	Classical Revival	None	Domestic - Single-family

**WALLINGFORD-MERIDIAN STREETCAR HISTORIC DISTRICT**  
Name of Property

**KING CO., WA**  
County and State

Number Count	Full Address	Year Built	Status	Style	Secondary Building	Classification
550	4610 SUNNYSIDE AVE N	1910	Contributing	Classical Revival	None	Domestic - Single-family
551	4611 SUNNYSIDE AVE N	1925	Contributing	Craftsman	None	Domestic - Single-family
552	4614 SUNNYSIDE AVE N	1913	Contributing	Craftsman	Contributing	Domestic - Single-family
553	4617 SUNNYSIDE AVE N	1905	Contributing	Classical Revival	Contributing	Domestic - Single-family
554	4620 SUNNYSIDE AVE N	1922	Contributing	Dutch Colonial Revival	None	Domestic - Single-family
555	4624 SUNNYSIDE AVE N	1922	Contributing	Craftsman	None	Domestic - Single-family
556	4628 SUNNYSIDE AVE N	1922	Contributing	Craftsman	None	Domestic - Single-family
557	4632 SUNNYSIDE AVE N	1922	Contributing	Colonial Revival	Contributing	Domestic - Single-family
558	4636 SUNNYSIDE AVE N	1922	Non Contributing	No Style	None	Domestic - Single-family
559	4640 SUNNYSIDE AVE N	1922	Contributing	Craftsman	None	Domestic - Single-family
560	4644 SUNNYSIDE AVE N	1922	Non Contributing	No Style	None	Domestic - Single-family
561	4648 SUNNYSIDE AVE N	1922	Contributing	Craftsman	Non Contributing	Domestic - Single-family
562	4649 SUNNYSIDE AVE N	1906	NRHP Listed	Neo-Classical	NRHP Listed	Other
563	4652 SUNNYSIDE AVE N	1922	Contributing	Craftsman	None	Domestic - Single-family
564	4656 SUNNYSIDE AVE N	1922	Contributing	Colonial Revival	None	Domestic - Single-family
565	4660 SUNNYSIDE AVE N	1923	Contributing	Colonial Revival	None	Domestic - Single-family
566	4664 SUNNYSIDE AVE N	1923	Contributing	Craftsman	None	Domestic - Single-family
567	4668 SUNNYSIDE AVE N	1923	Contributing	Craftsman	Contributing	Domestic - Single-family
568	4672 SUNNYSIDE AVE N	1921	Contributing	Dutch Colonial Revival	Contributing	Domestic - Single-family
569	4517 THACKERAY PL NE	1923	Contributing	Craftsman	Contributing	Domestic - Single-family
570	4521 THACKERAY PL NE	1922	Contributing	Craftsman	None	Domestic - Single-family
571	4525 THACKERAY PL NE	1913	Contributing	Colonial Revival	Contributing	Domestic - Single-family

**WALLINGFORD-MERIDIAN STREETCAR HISTORIC DISTRICT**  
Name of Property

**KING CO., WA**  
County and State

Number Count	Full Address	Year Built	Status	Style	Secondary Building	Classification
572	4526 THACKERAY PL NE	1909	Contributing	Craftsman	Non Contributing	Domestic - Single-family
573	4529 THACKERAY PL NE	1911	Contributing	Classical Revival	None	Domestic - Single-family
574	4530 THACKERAY PL NE	1922	Contributing	Craftsman	None	Domestic - Single-family
575	4533 THACKERAY PL NE	1923	Contributing	Colonial Revival	None	Domestic - Single-family
576	4534 THACKERAY PL NE	1909	Contributing	Classical Revival	None	Domestic - Single to Multi
577	4535 THACKERAY PL NE	1906	Contributing	Classical Revival	Contributing	Domestic - Single-family
578	4536 THACKERAY PL NE	1923	Contributing	Craftsman	None	Domestic - Single-family
579	4538 THACKERAY PL NE	1908	Contributing	Craftsman	Contributing	Domestic - Single-family
580	4541 THACKERAY PL NE	1924	Contributing	Craftsman	None	Domestic - Single-family
581	4545 THACKERAY PL NE	1906	Contributing	Craftsman	Contributing	Domestic - Single-family
582	4546 THACKERAY PL NE	1910	Non Contributing	Classical Revival	Non Contributing	Domestic - Single-family
583	4549 THACKERAY PL NE	1906	Contributing	Prairie	Non Contributing	Domestic - Single-family
584	4550 THACKERAY PL NE	1922	Contributing	Colonial Revival	None	Domestic - Single-family
585	4553 THACKERAY PL NE	1919	Contributing	Craftsman	Contributing	Domestic - Single-family
586	4554 THACKERAY PL NE	1909	Contributing	Craftsman	Contributing	Domestic - Single to Multi
587	4558 THACKERAY PL NE	1909	Contributing	Craftsman	Contributing	Domestic - Single-family
588	4702 THACKERAY PL NE	1909	Contributing	Classical Revival	Contributing	Domestic - Single-family
589	4703 THACKERAY PL NE	1911	Contributing	Craftsman	Contributing	Domestic - Single-family
590	4704 THACKERAY PL NE	1909	Contributing	Classical Revival	None	Domestic - Single-family
591	4707 THACKERAY PL NE	1909	Contributing	Craftsman	None	Domestic - Single-family
592	4710 THACKERAY PL NE	1911	Contributing	Craftsman	Non Contributing	Domestic - Single-family

**WALLINGFORD-MERIDIAN STREETCAR HISTORIC DISTRICT**  
Name of Property

**KING CO., WA**  
County and State

Number Count	Full Address	Year Built	Status	Style	Secondary Building	Classification
593	4711 THACKERAY PL NE	1912	Contributing	Craftsman	Contributing	Domestic - Single-family
594	4714 THACKERAY PL NE	1922	Non Contributing	Craftsman	None	Domestic - Single-family
595	4715 THACKERAY PL NE	1913	Contributing	Classical Revival	None	Domestic - Single-family
596	4718 THACKERAY PL NE	1920	Contributing	Craftsman	None	Domestic - Single-family
597	4719 THACKERAY PL NE	1909	Contributing	Craftsman	None	Domestic - Single-family
598	4723 THACKERAY PL NE	1909	Contributing	Classical Revival	None	Domestic - Single-family
599	4724 THACKERAY PL NE	1918	Contributing	Craftsman	Non Contributing	Domestic - Single-family
600	4726 THACKERAY PL NE	1920	Non Contributing	No Style	Non Contributing	Domestic - Single-family
601	4727 THACKERAY PL NE	1920	Contributing	Craftsman	None	Domestic - Single-family
602	4730 THACKERAY PL NE	1911	Non Contributing	Classical Revival	Non Contributing	Domestic - Single-family
603	4731 THACKERAY PL NE	1924	Non Contributing	Craftsman	Non Contributing	Domestic - Single-family
604	4734 THACKERAY PL NE	1909	Contributing	Craftsman	Non Contributing	Domestic - Single-family
605	4735 THACKERAY PL NE	1908	Contributing	Craftsman	Contributing	Domestic - Single-family
606	4739 THACKERAY PL NE	1914	Contributing	Craftsman	None	Domestic - Single-family
607	4741 THACKERAY PL NE	1911	Non Contributing	Craftsman	None	Domestic - Single-family
608	4742 THACKERAY PL NE	1917	Contributing	Dutch Colonial Revival	Non Contributing	Domestic - Single-family
609	4746 THACKERAY PL NE	1924	Contributing	Colonial Revival	Contributing	Domestic - Single-family
610	4747 THACKERAY PL NE	1921	Contributing	Colonial Revival	Contributing	Domestic - Single-family
611	4749 THACKERAY PL NE	1908	Contributing	Craftsman	Non Contributing	Domestic - Single to Multi
612	4750 THACKERAY PL NE	1921	Contributing	Craftsman	Non Contributing	Domestic - Single-family
613	4752 THACKERAY PL NE	1916	Non Contributing	No Style	None	Domestic - Single-family

**WALLINGFORD-MERIDIAN STREETCAR HISTORIC DISTRICT**  
Name of Property

**KING CO., WA**  
County and State

Number Count	Full Address	Year Built	Status	Style	Secondary Building	Classification
614	4755 THACKERAY PL NE	1909	Contributing	Classical Revival	Contributing	Domestic - Single-family
615	4757 THACKERAY PL NE	1909	Non Contributing	No Style	Non Contributing	Domestic - Single to Multi
616	4609 WALLINGFORD AVE N	1921	Contributing	Classical Revival	None	Domestic - Single-family
617	4610 WALLINGFORD AVE N	1913	Contributing	Craftsman	Contributing	Domestic - Single-family
618	4615 WALLINGFORD AVE N	1918	Contributing	Craftsman	Contributing	Domestic - Single-family
619	4618 WALLINGFORD AVE N	1921	Contributing	Arts and Crafts	None	Domestic - Single-family
620	4700 WALLINGFORD AVE N	1919	Contributing	Prairie	None	Domestic - Single-family
621	4706 WALLINGFORD AVE N	1918	Non Contributing	Craftsman	Non Contributing	Domestic - Single-family
622	4710 WALLINGFORD AVE N	1923	Non Contributing	Craftsman	Non Contributing	Domestic - Single-family
623	4714 WALLINGFORD AVE N	1920	Contributing	Craftsman	Contributing	Domestic - Single-family
624	4718 WALLINGFORD AVE N	1920	Contributing	Colonial Revival	Contributing	Domestic - Single-family
625	4912 WALLINGFORD AVE N	1911	Contributing	Craftsman	Contributing	Domestic - Single-family
626	4915 WALLINGFORD AVE N	1916	Contributing	Craftsman	Contributing	Domestic - Single-family
627	4916 WALLINGFORD AVE N	1915	Contributing	Craftsman	Non Contributing	Domestic - Single-family
628	4917 WALLINGFORD AVE N	1916	Contributing	Craftsman	None	Domestic - Single-family
629	4515 WOODLAWN AVE N	1923	Contributing	Dutch Colonial Revival	Contributing	Domestic - Single-family
630	4602 WOODLAWN AVE N	1910	Contributing	Craftsman	None	Domestic - Single-family
631	4606 WOODLAWN AVE N	1912	Contributing	Craftsman	None	Domestic - Single-family
632	4607 WOODLAWN AVE N	1928	Contributing	Tudor Revival	None	Domestic - Single-family
633	4612 WOODLAWN AVE N	1912	Non Contributing	Craftsman	None	Domestic - Single-family
634	4613 WOODLAWN AVE N	1916	Contributing	Classical Revival	None	Domestic - Single-family

WALLINGFORD-MERIDIAN STREETCAR HISTORIC DISTRICT  
 Name of Property

KING CO., WA  
 County and State

Number Count	Full Address	Year Built	Status	Style	Secondary Building	Classification
635	4616 WOODLAWN AVE N	1912	Contributing	Craftsman	Contributing	Domestic - Single-family
636	4802 WOODLAWN AVE N	1916	Contributing	Classical Revival	None	Domestic - Single-family
637	4806 WOODLAWN AVE N	1916	Contributing	Craftsman	None	Domestic - Single-family
638	4808 WOODLAWN AVE N	1916	Contributing	Craftsman	None	Domestic - Single-family
639	4903 WOODLAWN AVE N	1925	Contributing	Tudor Composite	None	Domestic - Single-family
640	4906 WOODLAWN AVE N	1910	Contributing	Minimal Traditional	Non Contributing	Domestic - Single-family
641	4907 WOODLAWN AVE N	1926	Contributing	Tudor Composite	None	Domestic - Single-family
642	4912 WOODLAWN AVE N	1906	Contributing	Classical Revival	None	Domestic - Single-family
643	4916 WOODLAWN AVE N	1906	Contributing	Craftsman	None	Domestic - Single to Multi